

Anti-STAT1 antibody (513-712) (STJ25715)

GENERAL INFORMATION

Product Type	Primary antibodies
Applications	WB/IHC-P/ELISA
Host / Source	Rabbit
Reactivity	Human/Mouse/Rat

PRODUCT PROPERTIES

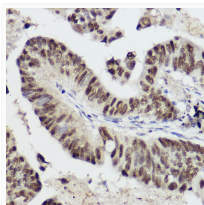
Clonality	Polyclonal
Concentration	Lot specific
Conjugation	Unconjugated
Purification	Affinity purification
Dilution Range	WB:1:2000-1:6000 IHC-P:1:50-1:200 ELISA:Recommended starting concentration is 1 μ g/mL. Please optimize the concentration based on your specific assay requirements.
Formulation	PBS with 0.09% Sodium Azide, 50% Glycerol, pH 7.3.
Isotype	IgG
Molecular Weight	Protein Mw: 87kDa Observed Mw: 84kDa
Storage Instruction	Store at -20°C for up to 1 year from the date of receipt, and avoid repeat freeze-thaw cycles.

TARGET INFORMATION

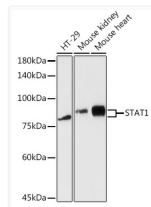
Gene ID	6772
Gene Symbol	STAT1
UniProt ID	STAT1_HUMAN
Immunogen Region	513-712
Immunogen Sequence	GLNVDQLNMLGEKLLGPNAS PDGLIPWTRFCKENINDKNF PFWLWIESILELIKHLPL WNDGCIIMGFISKERERALLK DQQPGTFLLRFSESSREGAI TFTWVERSQNGGEPDFHAVE PYTKKELSAVTFPDIIRNYK VMAAENIPENPLKYLPNID KDHFAGKYYSRPKEAPEPME LDGPKGTGYIKTELSVSEV
Specificity	A synthetic peptide corresponding to a sequence within amino acids 513-712 of human STAT1 (NP_009330.1).

ADDITIONAL INFORMATION

Note STRICTLY FOR FURTHER SCIENTIFIC RESEARCH USE ONLY (RUO). MUST NOT TO BE USED IN DIAGNOSTIC OR THERAPEUTIC APPLICATIONS.



Immunohistochemistry analysis of STAT1 in paraffin-embedded human lung cancer using STAT1 Rabbit polyclonal antibody (STJ25715) at dilution of 1:50 (40x lens). Perform high pressure antigen retrieval with 10 mM citrate buffer pH 6.0 before commencing with immunohistochemistry staining protocol.



Western blot analysis of various lysates using STAT1 Rabbit polyclonal antibody (STJ25715) at 1:5000 dilution. Secondary antibody: HRP Goat Anti-Rabbit IgG (H+L) (STJS000856) at 1:10000 dilution. Lysates/proteins: 25 μ g per lane. Blocking buffer: 3% nonfat dry milk in TBST. Detection: ECL Enhanced Kit. Exposure time: 180s.