

Anti-SNAP25 antibody (1-206) (STJ25637)

GENERAL INFORMATION

Product Type	Primary antibodies
Applications	WB/IHC-P/IF/ICC/ELISA
Host / Source	Rabbit
Reactivity	Human/Mouse/Rat

PRODUCT PROPERTIES

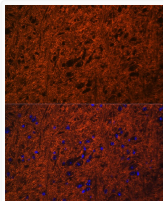
Clonality	Polyclonal
Concentration	Lot specific
Conjugation	Unconjugated
Purification	Affinity purification
Dilution Range	WB:1:500-1:1000 IHC-P:1:50-1:200 IF/ICC:1:50-1:200 ELISA:Recommended starting concentration is 1 Mu g/mL. Please optimize the concentration based on your specific assay requirements.
Formulation	PBS with 0.05% Proclin300, 50% Glycerol, pH 7.3.
Isotype	IgG
Molecular Weight	Protein Mw: 23kDa Observed Mw: 25kDa
Storage Instruction	Store at -20°C for up to 1 year from the date of receipt, and avoid repeat freeze-thaw cycles.

TARGET INFORMATION

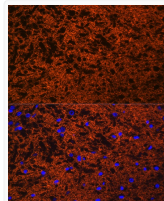
Gene ID	6616
Gene Symbol	SNAP25
UniProt ID	SNP25_HUMAN
Immunogen Region	1-206
Immunogen Sequence	MAEDADMNRNELEEMQRRADQ LADESLESTRMLQLVEESK DAGIRTLVMLDEQGEQLERI EEGMDQINKDMKEAEKRLTD LGKFCGLCVPCPNKLSDDA YKKAWGNQDGVVASQPARV VDEREQMAISGGFIRRVTDN ARENEMDENLEQVSGIIGNL RHMALDMGNEIDTQNRQIDR IMEKADSNKTRIDEANQRAT KMLGSG
Specificity	Recombinant fusion protein containing a sequence corresponding to amino acids 1-206 of human SNAP25 (NP_570824.1).

ADDITIONAL INFORMATION

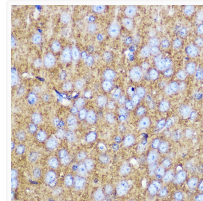
Note STRICTLY FOR FURTHER SCIENTIFIC RESEARCH USE ONLY (RUO). MUST NOT TO BE USED IN DIAGNOSTIC OR THERAPEUTIC APPLICATIONS.



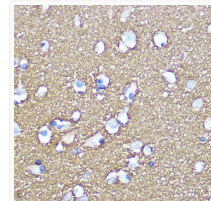
Immunofluorescence analysis of mouse brain using SNAP25 Rabbit polyclonal antibody (STJ25637) at dilution of 1:100 (40x lens). Blue: DAPI for nuclear staining.



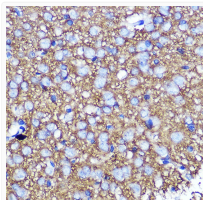
Immunofluorescence analysis of rat brain using SNAP25 Rabbit polyclonal antibody (STJ25637) at dilution of 1:100 (40x lens). Blue: DAPI for nuclear staining.



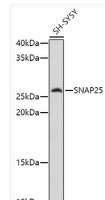
Immunohistochemistry analysis of paraffin-embedded mouse brain using SNAP25 Rabbit polyclonal antibody (STJ25637) at dilution of 1:100 (40x lens). Perform microwave antigen retrieval with 10 mM PBS buffer pH 7.2 before commencing with immunohistochemistry staining protocol.



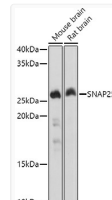
Immunohistochemistry analysis of paraffin-embedded human brain using SNAP25 Rabbit polyclonal antibody (STJ25637) at dilution of 1:100 (40x lens). Perform microwave antigen retrieval with 10 mM PBS buffer pH 7.2 before commencing with immunohistochemistry staining protocol.



Immunohistochemistry analysis of paraffin-embedded rat brain using SNAP25 Rabbit polyclonal antibody (STJ25637) at dilution of 1:100 (40x lens). Perform microwave antigen retrieval with 10 mM PBS buffer pH 7.2 before commencing with immunohistochemistry staining protocol.



Western blot analysis of extracts of SH-SY5Y cells, using SNAP25 antibody (STJ25637) at 1:1000 dilution. Secondary antibody: HRP Goat Anti-Rabbit IgG (H+L) (STJS000856) at 1:10000 dilution. Lysates/proteins: 25 Mu g per lane. Blocking buffer: 3% nonfat dry milk in TBST. Detection: ECL Basic Kit. Exposure time: 3s.



Western blot analysis of extracts of various cell lines, using SNAP25 antibody (STJ25637) at 1:1000 dilution. Secondary antibody: HRP Goat Anti-Rabbit IgG (H+L) (STJS000856) at 1:10000 dilution. Lysates/proteins: 25 Mu g per lane. Blocking buffer: 3% nonfat dry milk in TBST. Detection: ECL Basic Kit. Exposure time: 3s.