

Anti-SLC27A2 antibody (290-573) (STJ25573)

GENERAL INFORMATION

| | |
|---------------|-----------------------|
| Product Type | Primary antibodies |
| Applications | WB/IHC-P/IF/ICC/ELISA |
| Host / Source | Rabbit |
| Reactivity | Human/Mouse/Rat |

PRODUCT PROPERTIES

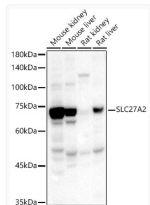
| | |
|---------------------|---|
| Clonality | Polyclonal |
| Concentration | Lot specific |
| Conjugation | Unconjugated |
| Purification | Affinity purification |
| Dilution Range | WB:1:500-1:1000 IHC-P:1:50-1:200 IF/ICC:1:50-1:200 ELISA:Recommended starting concentration is 1 Mu g/mL. Please optimize the concentration based on your specific assay requirements. |
| Formulation | PBS with 0.02% Sodium Azide, 50% Glycerol, pH 7.3. |
| Isotype | IgG |
| Molecular Weight | Protein Mw: 70kDa Observed Mw: 70kDa |
| Storage Instruction | Store at -20°C for up to 1 year from the date of receipt, and avoid repeat freeze-thaw cycles. |

TARGET INFORMATION

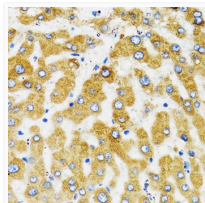
| | |
|--------------------|---|
| Gene ID | 11001 |
| Gene Symbol | SLC27A2 |
| UniProt ID | S27A2_HUMAN |
| Immunogen Region | 290-573 |
| Immunogen Sequence | TKFSASQFWDCCRKYNTVI QYIGELLRYLCNSPQKPNDR DHKVRLLALGNLGRGDVWRQF VKRFGDICIYEFYAATEGNI GFMNYARKVGVAVGRVNYLQK KIITYDLIKYDVEKDEPVRD ENGYCVRVPKGEVGLLVCKI TQLTPFNGYAGAKAQTEKKK LRDVFKKGDLYFNSGDLLMV DHENFIYFHDRVGGDTFRWKG ENVATTEVADTVGLVDFVQE VNVYGVHVPDHEGRIGMAS |
| Specificity | Recombinant fusion protein containing a sequence corresponding to amino acids 290-573 of human FATP2 (NP_003636.2). |

ADDITIONAL INFORMATION

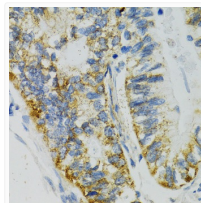
Note STRICTLY FOR FURTHER SCIENTIFIC RESEARCH USE ONLY (RUO). MUST NOT TO BE USED IN DIAGNOSTIC OR THERAPEUTIC APPLICATIONS.



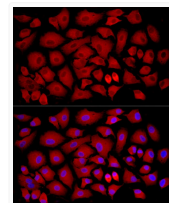
Western blot analysis of extracts of various cell lines, using SLC27A2 antibody (STJ25573) at 1:500 dilution. Secondary antibody: HRP Goat Anti-rabbit IgG (H+L) (STJS000856) at 1:10000 dilution. Lysates/proteins: 25 Mu g per lane. Blocking buffer: 3% non-fat dry milk in TBST. Detection: ECL Basic Kit. Exposure time: 10s.



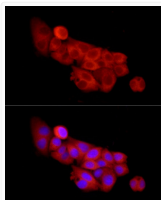
Immunohistochemistry analysis of paraffin-embedded human liver using SLC27A2 antibody (STJ25573) at dilution of 1:100 (40x lens). Perform microwave antigen retrieval with 10 mM PBS buffer pH 7. 2 before commencing with immunohistochemistry staining protocol.



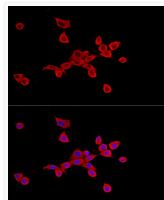
Immunohistochemistry analysis of paraffin-embedded human gastric cancer using SLC27A2 antibody (STJ25573) at dilution of 1:100 (40x lens). Perform microwave antigen retrieval with 10 mM PBS buffer pH 7. 2 before commencing with immunohistochemistry staining protocol.



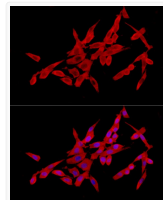
Immunofluorescence analysis of A-549 cells using SLC27A2 rabbit polyclonal antibody (STJ25573) at dilution of 1:50 (40x lens). Blue: DAPI for nuclear staining.



Immunofluorescence analysis of HepG2 cells using SLC27A2 rabbit polyclonal antibody (STJ25573) at dilution of 1:50 (40x lens). Blue: DAPI for nuclear staining.



Immunofluorescence analysis of NIH/3T3 cells using SLC27A2 rabbit polyclonal antibody (STJ25573) at dilution of 1:50 (40x lens). Blue: DAPI for nuclear staining.



Immunofluorescence analysis of PC-12 cells using SLC27A2 rabbit polyclonal antibody (STJ25573) at dilution of 1:50 (40x lens). Blue: DAPI for nuclear staining.