

Anti-SLC22A5 antibody (430-557) (STJ25566)

GENERAL INFORMATION

Product Type	Primary antibodies
Applications	WB/IF/ICC/ELISA
Host / Source	Rabbit
Reactivity	Human/Mouse/Rat

PRODUCT PROPERTIES

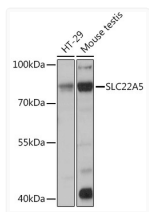
Clonality	Polyclonal
Concentration	Lot specific
Conjugation	Unconjugated
Purification	Affinity purification
Dilution Range	WB:1:500-1:2000 IF/CC:1:50-1:200 ELISA:Recommended starting concentration is 1 μ g/mL. Please optimize the concentration based on your specific assay requirements.
Formulation	PBS with 0.02% Sodium Azide, 50% Glycerol, pH 7.3.
Isotype	IgG
Molecular Weight	Protein Mw: 63kDa Observed Mw: 70kDa
Storage Instruction	Store at -20°C for up to 1 year from the date of receipt, and avoid repeat freeze-thaw cycles.

TARGET INFORMATION

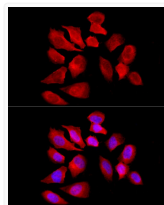
Gene ID	6584
Gene Symbol	SLC22A5
UniProt ID	S22A5_HUMAN
Immunogen Region	430-557
Immunogen Sequence	VLVMVGKFGVTAAFSMVYVY TAELYPTVVRNMGVGVSSSTA SRLGSILSPYFVYLGAYDRF LPYILMGSLTILTALTLFL PESFGTLPDITDQMLRVKG
Specificity	Recombinant fusion protein containing a sequence corresponding to amino acids 430-529 of human SLC22A5 (NP_003051.1).

ADDITIONAL INFORMATION

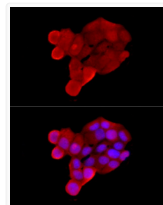
Note STRICTLY FOR FURTHER SCIENTIFIC RESEARCH USE ONLY (RUO). MUST NOT TO BE USED IN DIAGNOSTIC OR THERAPEUTIC APPLICATIONS.



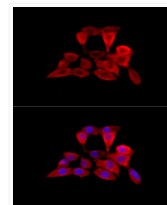
Western blot analysis of extracts of various cell lines, using SLC22A5 rabbit polyclonal antibody (STJ25566) at 1:1000 dilution. Secondary antibody: HRP Goat Anti-rabbit IgG (H+L) (STJS000856) at 1:10000 dilution. Lysates/proteins: 25 μ g per lane. Blocking buffer: 3% non-fat dry milk in TBST. Detection: ECL Basic Kit. Exposure time: 3s.



Immunofluorescence analysis of HeLa cells using SLC22A5 rabbit polyclonal antibody (STJ25566) at dilution of 1:200 (40x lens). Blue: DAPI for nuclear staining.



Immunofluorescence analysis of MCF7 cells using SLC22A5 rabbit polyclonal antibody (STJ25566) at dilution of 1:200 (40x lens). Blue: DAPI for nuclear staining.



Immunofluorescence analysis of NIH/3T3 cells using SLC22A5 rabbit polyclonal antibody (STJ25566) at dilution of 1:200 (40x lens). Blue: DAPI for nuclear staining.