

Anti-SLC16A7 antibody (379-478) (STJ25553)

GENERAL INFORMATION

Product Type	Primary antibodies
Applications	WB/ELISA
Host / Source	Rabbit
Reactivity	Human/Rat

PRODUCT PROPERTIES

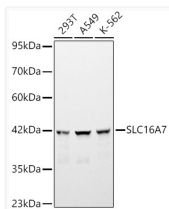
Clonality	Polyclonal
Concentration	Lot specific
Conjugation	Unconjugated
Purification	Affinity purification
Dilution Range	WB:1:500-1:2000 ELISA:Recommended starting concentration is 1 µg/mL. Please optimize the concentration based on your specific assay requirements.
Formulation	PBS with 0.01% Thimerosal, 50% Glycerol, pH 7.3.
Isotype	IgG
Molecular Weight	Protein Mw: 52kDa Observed Mw: 40-45kDa
Storage Instruction	Store at -20°C for up to 1 year from the date of receipt, and avoid repeat freeze-thaw cycles.

TARGET INFORMATION

Gene ID	9194
Gene Symbol	SLC16A7
UniProt ID	MOT2_HUMAN
Immunogen Region	379-478
Immunogen Sequence	TIVECGPVLGGPPLAGKLVDTGGEYKMYMSCGAIVVAASVWLLIGNAINYRLLAKERKE ENARQKTRESEPLSKSKHSE DVNVKVSNAQSVTSERETNI
Specificity	A synthetic peptide corresponding to a sequence within amino acids 379-478 of human SLC16A7 (NP_001257551.1).

ADDITIONAL INFORMATION

Note STRICTLY FOR FURTHER SCIENTIFIC RESEARCH USE ONLY (RUO). MUST NOT TO BE USED IN DIAGNOSTIC OR THERAPEUTIC APPLICATIONS.



Western blot analysis of various lysates, using SLC16A7 Rabbit polyclonal antibody (STJ25553) at 1:2000 dilution. Secondary antibody: HRP Goat Anti-Rabbit IgG (H+L) (STJS000856) at 1:10000 dilution. Lysates/proteins: 25µg per lane. Blocking buffer: 3% nonfat dry milk in TBST. Detection: ECL Basic Kit. Exposure time: 90s.