

Anti-SGK1 antibody (172-431) (STJ25513)

GENERAL INFORMATION

Product Type	Primary antibodies
Applications	WB/IHC-P/IF/ICC/ELISA
Host / Source	Rabbit
Reactivity	Mouse/Rat

PRODUCT PROPERTIES

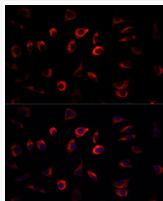
Clonality	Polyclonal
Concentration	Lot specific
Conjugation	Unconjugated
Purification	Affinity purification
Dilution Range	WB:1:100-1:500 IHC-P:1:50-1:200 IF/CC:1:50-1:200 ELISA:Recommended starting concentration is 1 Mu g/mL. Please optimize the concentration based on your specific assay requirements.
Formulation	PBS with 0.05% Proclin300, 50% Glycerol, pH7.3.
Isotype	IgG
Molecular Weight	Protein Mw: 49kDa Observed Mw: 45-60kDa
Storage Instruction	Store at -20°C for up to 1 year from the date of receipt, and avoid repeat freeze-thaw cycles.

TARGET INFORMATION

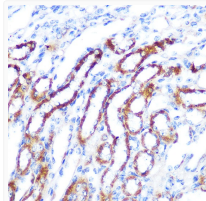
Gene ID	6446
Gene Symbol	SGK1
UniProt ID	SGK1_HUMAN
Immunogen Region	172-431
Immunogen Sequence	LYFVLDYINGGELFYHLQRE RCFLEPRARFYAAEIASALG YLHSLNIVYRDLKPENILLD SQGHIVLTDVGLCKENIEHN STTSTFCGTPEYLAPEVLHK QPYDRTVDWWCLGAVLYEML YGLPPFYSRNTAEMYDNILN KPLQLKPNITNSARHLEGL LQKDRTKRLGAKDDFMEIKS HVFFSLINWDDLINKKITPP FNPNVSGPNDLRHFDPPEFTE EPVPSIGKSPDLSVLTAS
Specificity	Recombinant fusion protein containing a sequence corresponding to amino acids 172-431 of human SGK1 (NP_005618.2).

ADDITIONAL INFORMATION

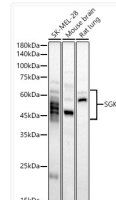
Note	STRICTLY FOR FURTHER SCIENTIFIC RESEARCH USE ONLY (RUO). MUST NOT TO BE USED IN DIAGNOSTIC OR THERAPEUTIC APPLICATIONS.
------	---



Immunofluorescence analysis of L929 cells using SGK1 Rabbit polyclonal antibody (STJ25513) at dilution of 1:100. Secondary antibody: Cy3 Goat Anti-Rabbit IgG (H+L) at 1:500 dilution. Blue: DAPI for nuclear staining.



Immunohistochemistry analysis of SGK1 in paraffin-embedded mouse kidney using SGK1 Rabbit polyclonal antibody (STJ25513) at dilution of 1:100 (40x lens). Perform microwave antigen retrieval with 10 mM Tris/EDTA buffer pH 9.0 before commencing with immunohistochemistry staining protocol.



Western blot analysis of various lysates, using SGK1 Rabbit polyclonal antibody (STJ25513) at 1:400 dilution. Secondary antibody: HRP Goat Anti-Rabbit IgG (H+L) (STJS000856) at 1:10000 dilution. Lysates/proteins: 25 Mu g per lane. Blocking buffer: 3% nonfat dry milk in TBST. Detection: ECL Basic Kit. Exposure time: 90s.