

Anti-SFTPC antibody (59-197) (STJ25509)

GENERAL INFORMATION

Product Type	Primary antibodies
Applications	WB/IHC-P/IF/ICC/ELISA
Host / Source	Rabbit
Reactivity	Human/Mouse/Rat

PRODUCT PROPERTIES

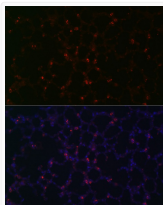
Clonality	Polyclonal
Concentration	Lot specific
Conjugation	Unconjugated
Purification	Affinity purification
Dilution Range	WB:1:1000-1:5000 IHC-P:1:50-1:200 IF/ICC:1:50-1:200 ELISA:Recommended starting concentration is 1 Mu g/mL. Please optimize the concentration based on your specific assay requirements.
Formulation	PBS with 0.09% Sodium Azide, 50% Glycerol, pH7.3.
Isotype	IgG
Molecular Weight	Protein Mw: 21kDa Observed Mw: 21-25kDa
Storage Instruction	Store at -20°C for up to 1 year from the date of receipt, and avoid repeat freeze-thaw cycles.

TARGET INFORMATION

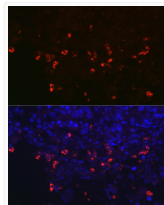
Gene ID	6440
Gene Symbol	SFTPC
UniProt ID	PSPC_HUMAN
Immunogen Region	59-197
Immunogen Sequence	HMSQKHTEMVLEMSIGAPEA QQRLLSEHLVTTATFSIGS TGLVYDYQQLLIAYKPAPG TCCYIMKIAPESIPSLEALT RKVHNFQMECSLQAKPAVPT SKLGQAEGRDAGSAPSGGDP AFLGMAVSTLCGEVPLYI
Specificity	Recombinant fusion protein containing a sequence corresponding to amino acids 59-197 of human SFTPC (NP_003009.2).

ADDITIONAL INFORMATION

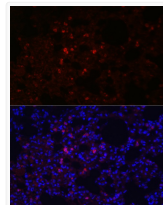
Note STRICTLY FOR FURTHER SCIENTIFIC RESEARCH USE ONLY (RUO). MUST NOT TO BE USED IN DIAGNOSTIC OR THERAPEUTIC APPLICATIONS.



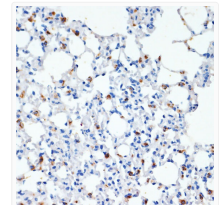
Immunofluorescence analysis of paraffin-embedded mouse lung using SFTPC Rabbit polyclonal antibody (STJ25509) at dilution of 1:100 (40x lens). Secondary antibody: Cy3 Goat Anti-Rabbit IgG (H+L) at 1:500 dilution. Blue: DAPI for nuclear staining.



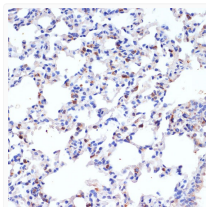
Immunofluorescence analysis of paraffin-embedded human lung cancer using SFTPC Rabbit polyclonal antibody (STJ25509) at dilution of 1:100 (40x lens). Secondary antibody: Cy3 Goat Anti-Rabbit IgG (H+L) at 1:500 dilution. Blue: DAPI for nuclear staining.



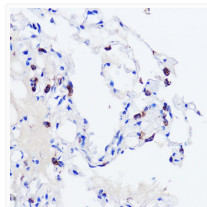
Immunofluorescence analysis of paraffin-embedded rat lung using SFTPC Rabbit polyclonal antibody (STJ25509) at dilution of 1:100 (40x lens). Secondary antibody: Cy3 Goat Anti-Rabbit IgG (H+L) at 1:500 dilution. Blue: DAPI for nuclear staining.



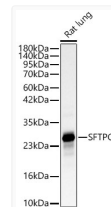
Immunohistochemistry analysis of SFTPC in paraffin-embedded mouse lung using SFTPC Rabbit polyclonal antibody (STJ25509) at dilution of 1:200 (40x lens). Perform microwave antigen retrieval with 10 mM PBS buffer pH 7. 2 before commencing with immunohistochemistry staining protocol.



Immunohistochemistry analysis of SFTPC in paraffin-embedded rat lung using SFTPC Rabbit polyclonal antibody (STJ25509) at dilution of 1:200 (40x lens). Perform microwave antigen retrieval with 10 mM PBS buffer pH 7. 2 before commencing with immunohistochemistry staining protocol.



Immunohistochemistry analysis of SFTPC in paraffin-embedded human lung using SFTPC Rabbit polyclonal antibody (STJ25509) at dilution of 1:200 (40x lens). Perform microwave antigen retrieval with 10 mM PBS buffer pH 7. 2 before commencing with immunohistochemistry staining protocol.



Western blot analysis of lysates from Rat lung, using SFTPC Rabbit polyclonal antibody (STJ25509) at 1:2000 dilution. Secondary antibody: HRP Goat Anti-Rabbit IgG (H+L) (STJS000856) at 1:10000 dilution. Lysates/proteins: 25ug per lane. Blocking buffer: 3% nonfat dry milk in TBST. Detection: ECL Basic Kit. Exposure time: 10s.