

Anti-SETD2 antibody (2475-2564) (STJ25493)

GENERAL INFORMATION

Product Type	Primary antibodies
Applications	WB/IHC-P/IF/ICC/IP/ELISA
Host / Source	Rabbit
Reactivity	Human/Mouse/Rat

PRODUCT PROPERTIES

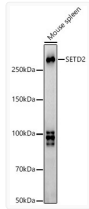
Clonality	Polyclonal
Concentration	Lot specific
Conjugation	Unconjugated
Purification	Affinity purification
Dilution Range	WB:1:500-1:1000 IHC-P:1:500-1:1000 IF/ICC:1:50-1:200 IP:0.5 Mu g-4 Mu g antibody for 400 Mu g-600 Mu g extracts of whole cells ELISA:Recommended starting concentration is 1 Mu g/mL. Please optimize the concentration based on your spec
Formulation	PBS with 0.05% Proclin300, 50% Glycerol, pH 7.3.
Isotype	IgG
Molecular Weight	Protein Mw: 288kDa Observed Mw: 288kDa
Storage Instruction	Store at -20°C for up to 1 year from the date of receipt, and avoid repeat freeze-thaw cycles.

TARGET INFORMATION

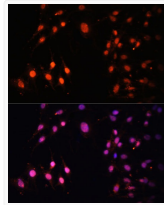
Gene ID	29072
Gene Symbol	SETD2
UniProt ID	SETD2_HUMAN
Immunogen Region	2475-2564
Immunogen Sequence	RKEMSQFIVQCLNPYRKPDC KVGRITTTDFKHLARKLTH GVMNKLKYCKNPEDLECNE NVKHKTKKEYIKKYMQKFGAV YKPKEDTELE
Specificity	A synthetic peptide corresponding to a sequence within amino acids 2475-2564 of human SETD2 (NP_054878.5).

ADDITIONAL INFORMATION

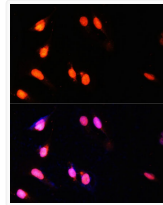
Note STRICTLY FOR FURTHER SCIENTIFIC RESEARCH USE ONLY (RUO). MUST NOT TO BE USED IN DIAGNOSTIC OR THERAPEUTIC APPLICATIONS.



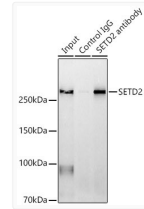
Western blot analysis of extracts of mouse spleen, using SETD2 antibody (STJ25493) at 1:900 dilution. Secondary antibody: HRP Goat Anti-rabbit IgG (H+L) (STJS000856) at 1:10000 dilution. Lysates/proteins: 25 Mu g per lane. Blocking buffer: 3% non-fat dry milk in TBST. Detection: ECL Basic Kit. Exposure time: 90s.



Immunofluorescence analysis of C6 cells using SETD2 Polyclonal Antibody (STJ25493) at dilution of 1:100 (40x lens). Blue: DAPI for nuclear staining.



Immunofluorescence analysis of U-2 OS cells using SETD2 Polyclonal Antibody (STJ25493) at dilution of 1:100 (40x lens). Blue: DAPI for nuclear staining.



Immunoprecipitation analysis of 600 Mu g extracts of mouse spleen using 3 Mu g SETD2 antibody (STJ25493). Western blot was performed from the immunoprecipitate using SETD2 antibody (STJ25493) at a dilution of 1:1000.