

Anti-SERPINF1 antibody (141-240) (STJ25489)

GENERAL INFORMATION

Product Type	Primary antibodies
Applications	WB/IF/ICC/ELISA
Host / Source	Rabbit
Reactivity	Human/Mouse

PRODUCT PROPERTIES

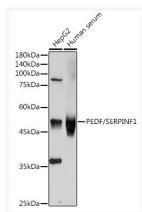
Clonality	Polyclonal
Concentration	Lot specific
Conjugation	Unconjugated
Purification	Affinity purification
Dilution Range	WB:1:500-1:1000 IF/CC:1:100-1:500 ELISA:Recommended starting concentration is 1 Mu g/mL. Please optimize the concentration based on your specific assay requirements.
Formulation	PBS with 0.09% Sodium Azide, 50% Glycerol, pH 7.3.
Isotype	IgG
Molecular Weight	Protein Mw: 46kDa Observed Mw: 46kDa
Storage Instruction	Store at -20°C for up to 1 year from the date of receipt, and avoid repeat freeze-thaw cycles.

TARGET INFORMATION

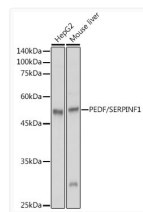
Gene ID	5176
Gene Symbol	SERPINF1
UniProt ID	PEDF_HUMAN
Immunogen Region	141-240
Immunogen Sequence	RIVFEKLLRIKSSFVAPLEK SYGTRPRVLTGNPRDLQEI NNWVQAQMKGLARSTKEIP DEISILLGVAHFQGWVTK FDSRKTSLDFYLDDEERTVR
Specificity	A synthetic peptide corresponding to a sequence within amino acids 141-240 of human PEDF/SERPINF1 (NP_002606.3).

ADDITIONAL INFORMATION

Note **STRICTLY FOR FURTHER SCIENTIFIC RESEARCH USE ONLY (RUO). MUST NOT TO BE USED IN DIAGNOSTIC OR THERAPEUTIC APPLICATIONS.**



Western blot analysis of various lysates using PEDF/SERPINF1 Rabbit polyclonal antibody (STJ25489) at 1:1000 dilution. Secondary antibody: HRP Goat Anti-Rabbit IgG (H+L) (STJS000856) at 1:10000 dilution. Lysates/proteins: 25 Mu g per lane. Blocking buffer: 3% nonfat dry milk in TBST. Detection: ECL Enhanced Kit. Exposure time: 10s.



Western blot analysis of various lysates using PEDF/SERPINF1 Rabbit polyclonal antibody (STJ25489) at 1:1000 dilution. Secondary antibody: HRP Goat Anti-Rabbit IgG (H+L) (STJS000856) at 1:10000 dilution. Lysates/proteins: 25 Mu g per lane. Blocking buffer: 3% nonfat dry milk in TBST. Detection: ECL Basic Kit. Exposure time: 1s.