

## Anti-SDC2 antibody (19-144) (STJ25458)

### GENERAL INFORMATION

Product Type	Primary antibodies
Applications	WB/IHC-P/ELISA
Host / Source	Rabbit
Reactivity	Human/Mouse/Rat

### PRODUCT PROPERTIES

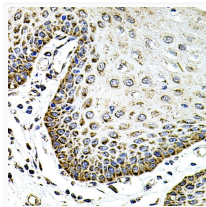
Clonality	Polyclonal
Concentration	Lot specific
Conjugation	Unconjugated
Purification	Affinity purification
Dilution Range	WB:1:500-1:2000 IHC-P:1:50-1:200 ELISA:Recommended starting concentration is 1 Mu g/mL. Please optimize the concentration based on your specific assay requirements.
Formulation	PBS with 0.09% Sodium Azide, 50% Glycerol, pH7.3.
Isotype	IgG
Molecular Weight	Protein Mw: 22kDa Observed Mw: 50kDa/22kDa
Storage Instruction	Store at -20°C for up to 1 year from the date of receipt, and avoid repeat freeze-thaw cycles.

### TARGET INFORMATION

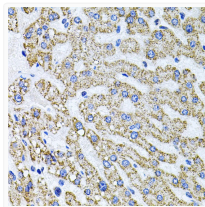
Gene ID	<a href="#">6383</a>
Gene Symbol	<a href="#">SDC2</a>
UniProt ID	<a href="#">SDC2_HUMAN</a>
Immunogen Region	19-144
Immunogen Sequence	ESRAELTSDKMYLDNSSIE EASGVYPIDDDDYASASGSG ADEDVESPELTTSRPLPKIL L TSAAPKVETTTLNQNKIP AQTKSPEETDKEKVLHLSLSE RKMDPAEEDTNVYTEKHSLS LFKRTE
Specificity	Recombinant fusion protein containing a sequence corresponding to amino acids 19-144 of human SDC2 (NP_002989.2).

### ADDITIONAL INFORMATION

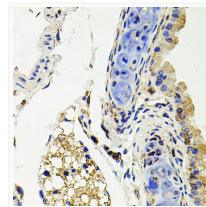
Note STRICTLY FOR FURTHER SCIENTIFIC RESEARCH USE ONLY (RUO). MUST NOT TO BE USED IN DIAGNOSTIC OR THERAPEUTIC APPLICATIONS.



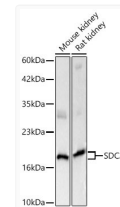
Immunohistochemistry analysis of SDC2 in paraffin-embedded human esophagus using SDC2 Rabbit polyclonal antibody (STJ25458) at dilution of 1:100 (40x lens). Perform microwave antigen retrieval with 10 mM PBS buffer pH 7. 2 before commencing with immunohistochemistry staining protocol.



Immunohistochemistry analysis of SDC2 in paraffin-embedded human liver damage using SDC2 Rabbit polyclonal antibody (STJ25458) at dilution of 1:100 (40x lens). Perform microwave antigen retrieval with 10 mM PBS buffer pH 7. 2 before commencing with immunohistochemistry staining protocol.



Immunohistochemistry analysis of SDC2 in paraffin-embedded mouse lung using SDC2 Rabbit polyclonal antibody (STJ25458) at dilution of 1:100 (40x lens). Perform microwave antigen retrieval with 10 mM PBS buffer pH 7. 2 before commencing with immunohistochemistry staining protocol.



Western blot analysis of various lysates using SDC2 Rabbit polyclonal antibody (STJ25458) at 1:1000 dilution. Secondary antibody: HRP Goat Anti-Rabbit IgG (H+L) (STJS000856) at 1:10000 dilution. Lysates/ proteins: 25 Mu g per lane. Blocking buffer: 3 % nonfat dry milk in TBST. Detection: ECL Basic Kit. Exposure time: 5s.