

## Anti-SCNN1B antibody (406-640) (STJ25453)

### GENERAL INFORMATION

Product Type	Primary antibodies
Applications	WB/ELISA
Host / Source	Rabbit
Reactivity	Human/Mouse

### PRODUCT PROPERTIES

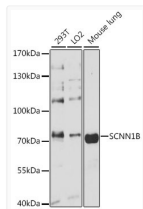
Clonality	Polyclonal
Concentration	Lot specific
Conjugation	Unconjugated
Purification	Affinity purification
Dilution Range	WB:1:500-1:2000 ELISA:Recommended starting concentration is 1 Mu g/mL. Please optimize the concentration based on your specific assay requirements.
Formulation	PBS with 0.01% Thimerosal, 50% Glycerol, pH 7.3.
Isotype	IgG
Molecular Weight	Protein Mw: 73kDa Observed Mw: 75kDa
Storage Instruction	Store at-20°C for up to 1 year from the date of receipt, and avoid repeat freeze-thaw cycles.

### TARGET INFORMATION

Gene ID	<a href="#">6338</a>
Gene Symbol	<a href="#">SCNN1B</a>
UniProt ID	<a href="#">SCNNB_HUMAN</a>
Immunogen Region	406-640
Immunogen Sequence	YPLPRGEKYCNNRDFPDWAH CYSDLQMSVAQRETCIGMCK ESCNDTQYKMTISMADWPSE ASEDWIFHVLSQLERDQSTNI TLSRKGIVKLNIFYQEFNYR TIEESAANNIWLLSNLGGQ FGFWMGGSVLCLEFGEIII DFWWITIIKLVAKSLRQR RAQASYAGPPPTVAELVEAH TNFGFQPDAPRSPNTGPYP SEQALPIPGTPPPNYDSLRL QPLDVIESDSEDAI
Specificity	Recombinant fusion protein containing a sequence corresponding to amino acids 406-640 of human SCNN1B (NP_000327.2).

### ADDITIONAL INFORMATION

Note **STRICTLY FOR FURTHER SCIENTIFIC RESEARCH USE ONLY (RUO). MUST NOT TO BE USED IN DIAGNOSTIC OR THERAPEUTIC APPLICATIONS.**



Western blot analysis of various lysates using SCNN1B Rabbit polyclonal antibody (STJ25453) at 1:3000 dilution. Secondary antibody: HRP Goat Anti-Rabbit IgG (H+L) (STJS000856) at 1:10000 dilution. Lysates/proteins: 25 Mu g per lane. Blocking buffer: 3% nonfat dry milk in TBST. Detection: ECL Basic Kit. Exposure time: 90s.