

Anti-RPS3 antibody (1-243) (STJ25407)

GENERAL INFORMATION

Product Type	Primary antibodies
Applications	WB/IHC-P/IF/ICC/ELISA
Host / Source	Rabbit
Reactivity	Human/Mouse/Rat

PRODUCT PROPERTIES

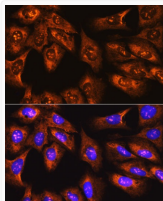
Clonality	Polyclonal
Concentration	Lot specific
Conjugation	Unconjugated
Purification	Affinity purification
Dilution Range	WB:1:500-1:1000 IHC-P:1:50-1:200 IF/CC:1:50-1:200 ELISA:Recommended starting concentration is 1 µg/mL. Please optimize the concentration based on your specific assay requirements.
Formulation	PBS with 0.02% Sodium Azide, 50% Glycerol, pH 7.3.
Isotype	IgG
Molecular Weight	Protein Mw: 27kDa Observed Mw: 33kDa
Storage Instruction	Store at -20°C for up to 1 year from the date of receipt, and avoid repeat freeze-thaw cycles.

TARGET INFORMATION

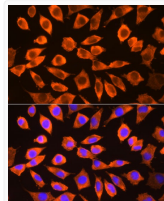
Gene ID	6188
Gene Symbol	RPS3
UniProt ID	R3S_HUMAN
Immunogen Region	1-243
Immunogen Sequence	MAVQISKKRKRFVADGIFKAE LNEFLTRELAEDGYSGVVEVR VTPTRTEIILLATRTQNVLG EKGRRIRELTAVVQKRFQGFPEGSVELYAEKVATRGLCAIA QAESLRYKLLGGLAVRRACY GVLRFIMESGAKGCEVVVSG KLRGQRAKSMKFVDGLMIHS GDPVNYVVDTAVRHVLLRQG VLGIKVKIMLPWDPTGKIGP KKPLPDHVSIVEPKDEILPT TPISQKGGKPEPPAMPQP
Specificity	Recombinant fusion protein containing a sequence corresponding to amino acids 1-243 of human RPS3 (NP_000996.2).

ADDITIONAL INFORMATION

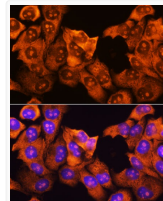
Note STRICTLY FOR FURTHER SCIENTIFIC RESEARCH USE ONLY (RUO). MUST NOT TO BE USED IN DIAGNOSTIC OR THERAPEUTIC APPLICATIONS.



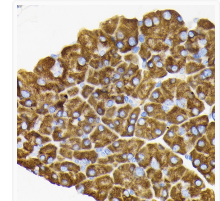
Immunofluorescence analysis of U-2 OS cells using RPS3 Rabbit polyclonal antibody (STJ25407) at dilution of 1:100. Secondary antibody: Cy3 Goat Anti-Rabbit IgG (H+L) at 1:500 dilution. Blue: DAPI for nuclear staining.



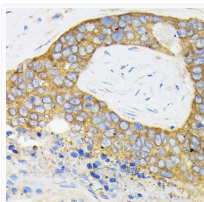
Immunofluorescence analysis of L929 cells using RPS3 Rabbit polyclonal antibody (STJ25407) at dilution of 1:100. Secondary antibody: Cy3 Goat Anti-Rabbit IgG (H+L) at 1:500 dilution. Blue: DAPI for nuclear staining.



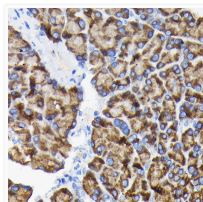
Immunofluorescence analysis of HeLa cells using RPS3 Rabbit polyclonal antibody (STJ25407) at dilution of 1:100. Secondary antibody: Cy3 Goat Anti-Rabbit IgG (H+L) at 1:500 dilution. Blue: DAPI for nuclear staining.



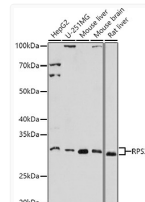
Immunohistochemistry analysis of RPS3 in paraffin-embedded mouse pancreas using RPS3 Rabbit polyclonal antibody (STJ25407) at dilution of 1:100 (40x lens). Perform microwave antigen retrieval with 10 mM Tris/EDTA buffer pH 9.0 before commencing with immunohistochemistry staining protocol.



Immunohistochemistry analysis of RPS3 in paraffin-embedded human esophageal cancer using RPS3 Rabbit polyclonal antibody (STJ25407) at dilution of 1:100 (40x lens). Perform microwave antigen retrieval with 10 mM Tris/EDTA buffer pH 9.0 before commencing with immunohistochemistry staining protocol.



Immunohistochemistry analysis of RPS3 in paraffin-embedded rat pancreas using RPS3 Rabbit polyclonal antibody (STJ25407) at dilution of 1:100 (40x lens). Perform microwave antigen retrieval with 10 mM Tris/EDTA buffer pH 9.0 before commencing with immunohistochemistry staining protocol.



Western blot analysis of various lysates using RPS3 Rabbit polyclonal antibody (STJ25407) at 1:1000 dilution. Secondary antibody: HRP Goat Anti-Rabbit IgG (H+L) (STJS000856) at 1:10000 dilution. Lysates/proteins: 25 µg per lane. Blocking buffer: 3% nonfat dry milk in TBST. Detection: ECL Basic Kit. Exposure time: 180s.