

Anti-RPGR antibody (1-260) (STJ25388)

GENERAL INFORMATION

Product Type	Primary antibodies
Applications	WB/IHC-P/IF/ICC/ELISA
Host / Source	Rabbit
Reactivity	Human/Mouse/Rat

PRODUCT PROPERTIES

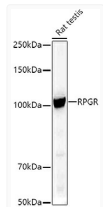
Clonality	Polyclonal
Concentration	Lot specific
Conjugation	Unconjugated
Purification	Affinity purification
Dilution Range	WB:1:500-1:1000 IHC-P:1:50-1:200 IF/CC:1:50-1:200 ELISA:Recommended starting concentration is 1 µg/mL. Please optimize the concentration based on your specific assay requirements.
Formulation	PBS with 0.05% Proclin300, 50% Glycerol, pH 7.3.
Isotype	IgG
Molecular Weight	Protein Mw: 113kDa Observed Mw: 113kDa
Storage Instruction	Store at -20°C for up to 1 year from the date of receipt, and avoid repeat freeze-thaw cycles.

TARGET INFORMATION

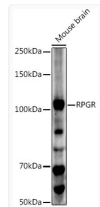
Gene ID	6103
Gene Symbol	RPGR
UniProt ID	RPGR_HUMAN
Immunogen Region	1-260
Immunogen Sequence	MREPEELMPD SGAVFTFGKS KFAENNP GKFVFKNDVPVHL SCGDEHSAVVTGNNKLYMFG SNNWQQLGLGSKSAISKPTC VKALKPEKVKLAACGRNHTL VSTEGGNVYATGGNNEGQLG LGDTEERNTFHVISFFTSEH KIKQLSAGSNTSAALTEDGR LFMWGDNSEGQIGLKNVSNV CVPQQVTIGKPVSWISCGYY HSAFVTTDGELYVFGPEPENG KLGLPNQLLGNHRTPQLVS
Specificity	Recombinant fusion protein containing a sequence corresponding to amino acids 1-260 of human RPGR (NP_001030025.1).

ADDITIONAL INFORMATION

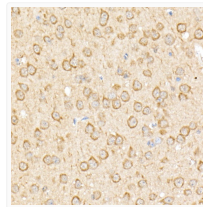
Note STRICTLY FOR FURTHER SCIENTIFIC RESEARCH USE ONLY (RUO). MUST NOT TO BE USED IN DIAGNOSTIC OR THERAPEUTIC APPLICATIONS.



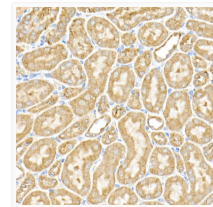
Western blot analysis of extracts of Rat testis, using RPGR antibody (STJ25388) at 1:500 dilution. Secondary antibody: HRP Goat Anti-rabbit IgG (H+L) (STJS000856) at 1:10000 dilution. Lysates/proteins: 25 µg per lane. Blocking buffer: 3% non-fat dry milk in TBST. Detection: ECL Basic Kit. Exposure time: 30s.



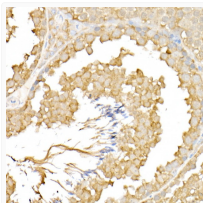
Western blot analysis of extracts of mouse brain, using RPGR antibody (STJ25388) at 1:500 dilution. Secondary antibody: HRP Goat Anti-rabbit IgG (H+L) (STJS000856) at 1:10000 dilution. Lysates/proteins: 25 µg per lane. Blocking buffer: 3% non-fat dry milk in TBST. Detection: ECL Enhanced Kit. Exposure time: 180s.



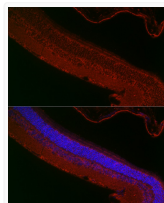
Immunohistochemistry analysis of paraffin-embedded mouse brain using RPGR rabbit polyclonal antibody (STJ25388) at dilution of 1:50 (40x lens). Perform high pressure antigen retrieval with 10 mM citrate buffer pH 6.0 before commencing with immunohistochemistry staining protocol.



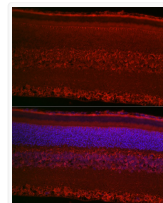
Immunohistochemistry analysis of paraffin-embedded mouse kidney using RPGR rabbit polyclonal antibody (STJ25388) at dilution of 1:50 (40x lens). Perform high pressure antigen retrieval with 10 mM citrate buffer pH 6.0 before commencing with immunohistochemistry staining protocol.



Immunohistochemistry analysis of paraffin-embedded mouse testis using RPGR rabbit polyclonal antibody (STJ25388) at dilution of 1:50 (40x lens). Perform high pressure antigen retrieval with 10 mM citrate buffer pH 6.0 before commencing with immunohistochemistry staining protocol.



Immunofluorescence analysis of mouse retina cells using RPGR rabbit polyclonal antibody (STJ25388) at dilution of 1:50 (40x lens). Blue: DAPI for nuclear staining.



Immunofluorescence analysis of rat retina cells using RPGR rabbit polyclonal antibody (STJ25388) at dilution of 1:50 (40x lens). Blue: DAPI for nuclear staining.