

Anti-RNF168 antibody (300-571) (STJ25369)

GENERAL INFORMATION

Product Type	Primary antibodies
Applications	WB/ELISA
Host / Source	Rabbit
Reactivity	Human/Mouse

PRODUCT PROPERTIES

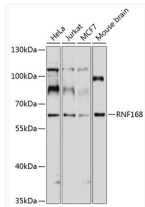
Clonality	Polyclonal
Concentration	Lot specific
Conjugation	Unconjugated
Purification	Affinity purification
Dilution Range	WB:1:1000-1:2000 ELISA:Recommended starting concentration is 1 µg/mL. Please optimize the concentration based on your specific assay requirements.
Formulation	PBS with 0.02% Sodium Azide, 50% Glycerol, pH 7.3.
Isotype	IgG
Molecular Weight	Protein Mw: 65kDa Observed Mw: 65kDa
Storage Instruction	Store at -20°C for up to 1 year from the date of receipt, and avoid repeat freeze-thaw cycles.

TARGET INFORMATION

Gene ID	165918
Gene Symbol	RNF168
UniProt ID	RN168_HUMAN
Immunogen Region	300-571
Immunogen Sequence	WLCACGAEWYHEGNVKTRPS NHGKELCVLSHERPKTRVPY SKETAVMPCGRTESGCAPTS GVTQTNGNNTGETENEESCL LISKEISKRKNQESSFEAVK DPCFSAKRRKVSPESSPDQE ETEINFQTQLIDLLEHLLFER HKQEEQDRLLALQLQKEVDK EQMVPNRQKQKSPDEYHLRAT SSPPDKVLNGQRKNPKDGNF KRQTHTKHPTPERGSRDKNR QVSLKMQLKQSVNRRKMPN
Specificity	Recombinant fusion protein containing a sequence corresponding to amino acids 300-571 of human RNF168 (NP_689830.2).

ADDITIONAL INFORMATION

Note **STRICTLY FOR FURTHER SCIENTIFIC RESEARCH USE ONLY (RUO). MUST NOT TO BE USED IN DIAGNOSTIC OR THERAPEUTIC APPLICATIONS.**



Western blot analysis of extracts of various cell lines, using RNF168 antibody (STJ25369) at 1:1000 dilution. Secondary antibody: HRP Goat Anti-Rabbit IgG (H+L) (STJS000856) at 1:10000 dilution. Lysates/proteins: 25 µg per lane. Blocking buffer: 3% nonfat dry milk in TBST. Detection: ECL Basic Kit. Exposure time: 10s.