

## Anti-RNASE13 antibody (1-156) (STJ25364)

### GENERAL INFORMATION

Product Type	Primary antibodies
Applications	WB/IHC-P/ELISA
Host / Source	Rabbit
Reactivity	Human/Mouse

### PRODUCT PROPERTIES

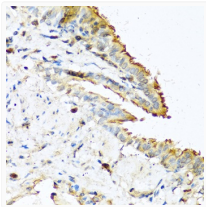
Clonality	Polyclonal
Concentration	Lot specific
Conjugation	Unconjugated
Purification	Affinity purification
Dilution Range	WB:1:500-1:2000 IHC-P:1:100-1:200 ELISA:Recommended starting concentration is 1 $\mu$ g/mL. Please optimize the concentration based on your specific assay requirements.
Formulation	PBS with 0.02% Sodium Azide, 50% Glycerol, pH 7.3.
Isotype	IgG
Molecular Weight	Protein Mw: 18kDa Observed Mw: 18kDa
Storage Instruction	Store at -20°C for up to 1 year from the date of receipt, and avoid repeat freeze-thaw cycles.

### TARGET INFORMATION

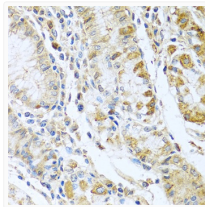
Gene ID	<a href="#">440163</a>
Gene Symbol	<a href="#">RNASE13</a>
UniProt ID	<a href="#">RNS13_HUMAN</a>
Immunogen Region	1-156
Immunogen Sequence	MAPAVTRLLFLQLVLGPTLV MDIKMQIGSRNFYTLSDYPRVNYPKGFRGYCNGLMSYMR GKMQNSDCPKIHYYIHAPWK AIQKFKYSDSFCENYNEYC TLTQDSLPIITVCSLSHQQPP TSCYYNSTLTNQLYLLCSR KYEADPIGIAGLYSGI
Specificity	Recombinant fusion protein containing a sequence corresponding to amino acids 1-156 of human RNASE13 (NP_001012264.1).

### ADDITIONAL INFORMATION

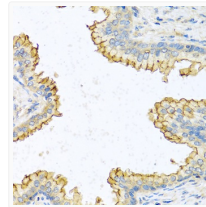
Note **STRICTLY FOR FURTHER SCIENTIFIC RESEARCH USE ONLY (RUO). MUST NOT TO BE USED IN DIAGNOSTIC OR THERAPEUTIC APPLICATIONS.**



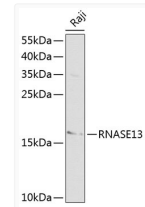
Immunohistochemistry analysis of paraffin-embedded mouse lung using RNASE13 antibody (STJ25364) at dilution of 1:100 (40x lens). Perform microwave antigen retrieval with 10 mM PBS buffer pH 7.2 before commencing with immunohistochemistry staining protocol.



Immunohistochemistry analysis of paraffin-embedded human stomach using RNASE13 antibody (STJ25364) at dilution of 1:100 (40x lens). Perform microwave antigen retrieval with 10 mM PBS buffer pH 7.2 before commencing with immunohistochemistry staining protocol.



Immunohistochemistry analysis of paraffin-embedded human prostate using RNASE13 antibody (STJ25364) at dilution of 1:100 (40x lens). Perform microwave antigen retrieval with 10 mM PBS buffer pH 7.2 before commencing with immunohistochemistry staining protocol.



Western blot analysis of extracts of Raji cells, using RNASE13 antibody (STJ25364) at 1:1000 dilution. Secondary antibody: HRP Goat Anti-Rabbit IgG (H+L) (STJS000856) at 1:10000 dilution. Lysates/proteins: 25  $\mu$ g per lane. Blocking buffer: 3% nonfat dry milk in TBST.