

Anti-RHOT2 antibody (340-550) (STJ25355)

GENERAL INFORMATION

Product Type	Primary antibodies
Applications	WB/IHC-P/IF/ICC/ELISA
Host / Source	Rabbit
Reactivity	Human/Mouse/Rat

PRODUCT PROPERTIES

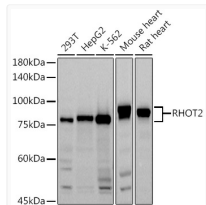
Clonality	Polyclonal
Concentration	Lot specific
Conjugation	Unconjugated
Purification	Affinity purification
Dilution Range	WB:1:500-1:1000 IHC-P:1:50-1:200 IF/CC:1:50-1:200 ELISA:Recommended starting concentration is 1 µg/mL. Please optimize the concentration based on your specific assay requirements.
Formulation	PBS with 0.05% Proclin300, 50% Glycerol, pH7.3.
Isotype	IgG
Molecular Weight	Protein Mw: 68kDa Observed Mw: 80kDa
Storage Instruction	Store at -20°C for up to 1 year from the date of receipt, and avoid repeat freeze-thaw cycles.

TARGET INFORMATION

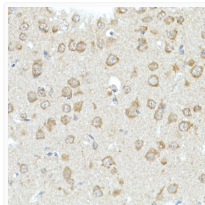
Gene ID	89941
Gene Symbol	RHOT2
UniProt ID	MIRO2_HUMAN
Immunogen Region	340-550
Immunogen Sequence	PWGPELPRTV RTEAGRLPLH GYLCQWTLV TYLDVRSCLGH LGYLGYP T LCEQDQAHAITV TREKRLDQEKGTQRSVLLC KVVGARGV GKS AFLQAF LGR GLGHQDTREQPPGYAIDTVQ VNGQEKY LILCEVGT DGLLA TSLDATCDVACL MFDGSDPK SFAHCASVYKH H YMDGGQTPC LFVSSKADLP EGVAVSGPSP AEFCKHRLPA
Specificity	Recombinant fusion protein containing a sequence corresponding to amino acids 340-550 of human RHOT2 (NP_620124.1).

ADDITIONAL INFORMATION

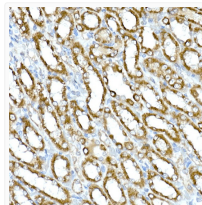
Note **STRICTLY FOR FURTHER SCIENTIFIC RESEARCH USE ONLY (RUO). MUST NOT TO BE USED IN DIAGNOSTIC OR THERAPEUTIC APPLICATIONS.**



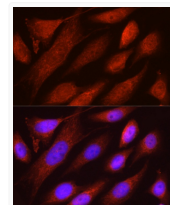
Western blot analysis of extracts of various cell lines, using (STJ25355) at 1:1000 dilution. Secondary antibody: HRP Goat Anti-rabbit IgG (H+L) (STJS000856) at 1:10000 dilution. Lysates/proteins: 25 µg per lane. Blocking buffer: 3% non-fat dry milk in TBST. Detection: ECL Basic Kit. Exposure time: 30s.



Immunohistochemistry analysis of paraffin-embedded mouse brain using RHOT2 rabbit polyclonal antibody (STJ25355) at dilution of 1:50 (40x lens). Perform high pressure antigen retrieval with 10 mM citrate buffer pH 6.0 before commencing with immunohistochemistry staining protocol.



Immunohistochemistry analysis of paraffin-embedded rat kidney using RHOT2 rabbit polyclonal antibody (STJ25355) at dilution of 1:50 (40x lens). Perform high pressure antigen retrieval with 10 mM citrate buffer pH 6.0 before commencing with immunohistochemistry staining protocol.



Immunofluorescence analysis of U2OS cells using RHOT2 rabbit polyclonal antibody (STJ25355) at dilution of 1:50 (40x lens). Blue: DAPI for nuclear staining.