

Anti-RHOc antibody (1-193) (STJ25354)

GENERAL INFORMATION

Product Type	Primary antibodies
Applications	WB/ELISA
Host / Source	Rabbit
Reactivity	Human/Rat

PRODUCT PROPERTIES

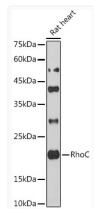
Clonality	Polyclonal
Concentration	Lot specific
Conjugation	Unconjugated
Purification	Affinity purification
Dilution Range	WB:1:500-1:1000 ELISA:Recommended starting concentration is 1 μ g/mL. Please optimize the concentration based on your specific assay requirements.
Formulation	PBS with 0.02% Sodium Azide, 50% Glycerol, pH 7.3.
Isotype	IgG
Molecular Weight	Protein Mw: 22kDa Observed Mw: 22kDa
Storage Instruction	Store at -20°C for up to 1 year from the date of receipt, and avoid repeat freeze-thaw cycles.

TARGET INFORMATION

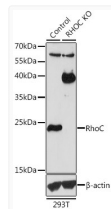
Gene ID	389
Gene Symbol	RHOC
UniProt ID	RHOC_HUMAN
Immunogen Region	1-193
Immunogen Sequence	MAAIRKLVIVGDGACGKTC LLIVFSKDQFPEVYVPTVFE NYIADIEVDGKQVELALWDT AGQEDYDRLRPLSYPTDVI LMCFSIDSPDSLENIPEKWT PEVKHFPCPNVPIILVGNKKD LRQDEHTRRELAKMKQEPVR SEEGRDMANRISAFGYLECS AKTKEGVREVFEMATRAGLQ VRKNKRRRGCPIL
Specificity	Recombinant fusion protein containing a sequence corresponding to amino acids 1-193 of human RhoC (NP_786886.1).

ADDITIONAL INFORMATION

Note **STRICTLY FOR FURTHER SCIENTIFIC RESEARCH USE ONLY (RUO). MUST NOT TO BE USED IN DIAGNOSTIC OR THERAPEUTIC APPLICATIONS.**



Western blot analysis of extracts of Rat heart cells, using RhoC antibody (STJ25354) at 1:1000 dilution. Secondary antibody: HRP Goat Anti-Rabbit IgG (H+L) (STJS000856) at 1:10000 dilution. Lysates/proteins: 25 μ g per lane. Blocking buffer: 3% nonfat dry milk in TBST. Detection: ECL Basic Kit. Exposure time: 90s.



Western blot analysis of extracts from normal (control) and RhoC knockout (KO) 293T cells, using RhoC antibody (STJ25354) at 1:1000 dilution. Secondary antibody: HRP Goat Anti-Rabbit IgG (H+L) (STJS000856) at 1:10000 dilution. Lysates/proteins: 25 μ g per lane. Blocking buffer: 3% nonfat dry milk in TBST. Detection: ECL Basic Kit. Exposure time: 300s.