

Anti-REG3G antibody (27-174) (STJ25328)

GENERAL INFORMATION

Product Type	Primary antibodies
Applications	WB/IF/ICC/ELISA
Host / Source	Rabbit
Reactivity	Human/Mouse/Rat

PRODUCT PROPERTIES

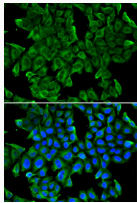
Clonality	Polyclonal
Concentration	Lot specific
Conjugation	Unconjugated
Purification	Affinity purification
Dilution Range	WB:1:500-1:2000 IF/CC:1:10-1:100 ELISA:Recommended starting concentration is 1 Mu g/mL. Please optimize the concentration based on your specific assay requirements.
Formulation	PBS with 0.02% Sodium Azide, 50% Glycerol, pH 7.3.
Isotype	IgG
Molecular Weight	Protein Mw: 19kDa Observed Mw: 19kDa
Storage Instruction	Store at -20°C for up to 1 year from the date of receipt, and avoid repeat freeze-thaw cycles.

TARGET INFORMATION

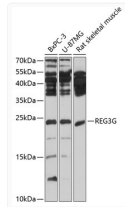
Gene ID	19695
Gene Symbol	Reg3g
UniProt ID	REG3G_MOUSE
Immunogen Region	27-174
Immunogen Sequence	EVAKKDAPSSRRSSCPKGSRA YGSYCYALFSVSKNWDADM ACQKRPSGHLVSVLSGAEAS FLSSMIKSSGNSGQYVWIGL HDPTLG YEPNRGGWEWSNAD VMNYINWETNPSSSSGNHCG TLRSRAGFLKWRENYCNLEL PYVCKFKA
Specificity	A synthetic peptide corresponding to a sequence within amino acids 27-174 of mouse REG3G (NP_035390.1).

ADDITIONAL INFORMATION

Note STRICTLY FOR FURTHER SCIENTIFIC RESEARCH USE ONLY (RUO). MUST NOT TO BE USED IN DIAGNOSTIC OR THERAPEUTIC APPLICATIONS.



Immunofluorescence analysis of MCF-7 cells using REG3G antibody (STJ25328). Blue: DAPI for nuclear staining.



Western blot analysis of extracts of various cell lines, using REG3G antibody (STJ25328) at 1:1000 dilution. Secondary antibody: HRP Goat Anti-Rabbit IgG (H+L) (STJS000856) at 1:10000 dilution. Lysates/proteins: 25 Mu g per lane. Blocking buffer: 3% nonfat dry milk in TBST. Detection: ECL Basic Kit. Exposure time: 10s.