

Anti-RAN antibody (1-216) (STJ25292)

GENERAL INFORMATION

Product Type	Primary antibodies
Applications	WB/IF/ICC/ELISA
Host / Source	Rabbit
Reactivity	Mouse/Rat

PRODUCT PROPERTIES

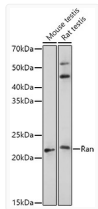
Clonality	Polyclonal
Concentration	Lot specific
Conjugation	Unconjugated
Purification	Affinity purification
Dilution Range	WB:1:500-1:1000 IF/CC:1:50-1:200 ELISA:Recommended starting concentration is 1 μ g/mL. Please optimize the concentration based on your specific assay requirements.
Formulation	PBS with 0.02% Sodium Azide, 50% Glycerol, pH 7.3.
Isotype	IgG
Molecular Weight	Protein Mw: 24kDa Observed Mw: 24kDa
Storage Instruction	Store at -20°C for up to 1 year from the date of receipt, and avoid repeat freeze-thaw cycles.

TARGET INFORMATION

Gene ID	5901
Gene Symbol	RAN
UniProt ID	RAN_HUMAN
Immunogen Region	1-216
Immunogen Sequence	MAAQGEPQVQFKLVLDGDDG TGKTTFVKRHLTGEFEKKYV ATLGVEVHPLVFHTNRGPIK FNVWDTAGQEKFGGLRDGYY IQAQCAIIMFDVTSRVTYKN VPWHRDLVRCENIPVLC GNKVDIKDRKVKAKSIVFHR KKNLQYYDISAKSNYNFEKP FLWLARKLIGDPNLEFVAMP ALAPPEVVMDDPALAAQYEHD LEVAQTALPDEDDDL
Specificity	Recombinant fusion protein containing a sequence corresponding to amino acids 1-216 of human Ran (NP_006316.1).

ADDITIONAL INFORMATION

Note **STRICTLY FOR FURTHER SCIENTIFIC RESEARCH USE ONLY (RUO). MUST NOT TO BE USED IN DIAGNOSTIC OR THERAPEUTIC APPLICATIONS.**



Western blot analysis of extracts of various cell lines, using Ran antibody (STJ25292) at 1:500 dilution. Secondary antibody: HRP Goat Anti-Rabbit IgG (H+L) (STJS000856) at 1:10000 dilution. Lysates/proteins: 25 μ g per lane. Blocking buffer: 3% nonfat dry milk in TBST. Detection: ECL Basic Kit. Exposure time: 30s.