

## Anti-RAMP2 antibody (1-145) (STJ25291)

### GENERAL INFORMATION

Product Type	Primary antibodies
Applications	WB/IHC-P/ELISA
Host / Source	Rabbit
Reactivity	Human/Mouse/Rat

### PRODUCT PROPERTIES

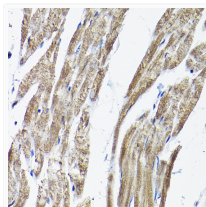
Clonality	Polyclonal
Concentration	Lot specific
Conjugation	Unconjugated
Purification	Affinity purification
Dilution Range	WB:1:500-1:2000 IHC-P:1:50-1:200 ELISA:Recommended starting concentration is 1 Mu g/mL. Please optimize the concentration based on your specific assay requirements.
Formulation	PBS with 0.02% Sodium Azide, 50% Glycerol, pH 7.3.
Isotype	IgG
Molecular Weight	Protein Mw: 20kDa Observed Mw: 15kDa
Storage Instruction	Store at -20°C for up to 1 year from the date of receipt, and avoid repeat freeze-thaw cycles.

### TARGET INFORMATION

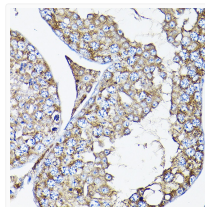
Gene ID	<a href="#">10266</a>
Gene Symbol	<a href="#">RAMP2</a>
UniProt ID	<a href="#">RAMP2_HUMAN</a>
Immunogen Region	1-145
Immunogen Sequence	MASLRVERAGGPRLPRTRVG RPAALRLLLLL GAVLNPHEA LAQPLPTTGTPGSEGTVKN YETAVQFCWNHYKDQMDPIE KDWCDWAMISRPYSTLRDCL EHFAELFDLGFNPLAERII FETHQIHFANCSLVQPTFSD PPEDEV
Specificity	Recombinant fusion protein containing a sequence corresponding to amino acids 1-145 of human RAMP2 (NP_005845.2).

### ADDITIONAL INFORMATION

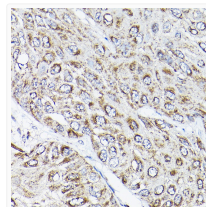
Note **STRICTLY FOR FURTHER SCIENTIFIC RESEARCH USE ONLY (RUO). MUST NOT TO BE USED IN DIAGNOSTIC OR THERAPEUTIC APPLICATIONS.**



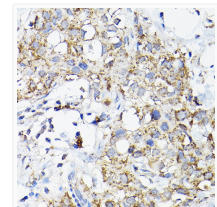
Immunohistochemistry analysis of paraffin-embedded rat heart using RAMP2 Rabbit polyclonal antibody (STJ25291) at dilution of 1:200 (40x lens). Perform high pressure antigen retrieval with 10 mM citrate buffer pH 6. 0 before commencing with immunohistochemistry staining protocol.



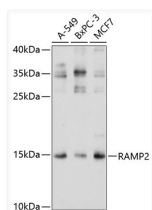
Immunohistochemistry analysis of paraffin-embedded mouse testis using RAMP2 Rabbit polyclonal antibody (STJ25291) at dilution of 1:200 (40x lens). Perform high pressure antigen retrieval with 10 mM citrate buffer pH 6. 0 before commencing with immunohistochemistry staining protocol.



Immunohistochemistry analysis of paraffin-embedded human esophageal cancer using RAMP2 Rabbit polyclonal antibody (STJ25291) at dilution of 1:200 (40x lens). Perform high pressure antigen retrieval with 10 mM citrate buffer pH 6. 0 before commencing with immunohistochemistry staining protocol.



Immunohistochemistry analysis of paraffin-embedded human breast cancer using RAMP2 Rabbit polyclonal antibody (STJ25291) at dilution of 1:200 (40x lens). Perform high pressure antigen retrieval with 10 mM citrate buffer pH 6. 0 before commencing with immunohistochemistry staining protocol.



Western blot analysis of extracts of various cell lines, using RAMP2 antibody (STJ25291) at 1:1000 dilution. Secondary antibody: HRP Goat Anti-Rabbit IgG (H+L) (STJS000856) at 1:10000 dilution. Lysates/proteins: 25 Mu g per lane. Blocking buffer: 3% nonfat dry milk in TBST. Detection: ECL Basic Kit. Exposure time: 10s.