

Anti-RAF1 antibody (190-350) (STJ25284)

GENERAL INFORMATION

Product Type	Primary antibodies
Applications	WB/IHC-P/IF/ICC/ELISA
Host / Source	Rabbit
Reactivity	Human/Mouse/Rat

PRODUCT PROPERTIES

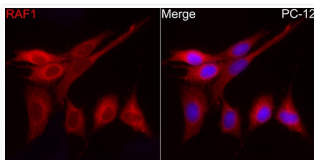
Clonality	Polyclonal
Concentration	Lot specific
Conjugation	Unconjugated
Purification	Affinity purification
Dilution Range	WB:1:500-1:1000 IHC-P:1:50-1:200 IF/ICC:1:50-1:200 ELISA:Recommended starting concentration is 1 μ g/mL. Please optimize the concentration based on your specific assay requirements.
Formulation	PBS with 0.05% Proclin300, 50% Glycerol, pH7.3.
Isotype	IgG
Molecular Weight	Protein Mw: 73kDa Observed Mw: 73kDa
Storage Instruction	Store at -20°C for up to 1 year from the date of receipt, and avoid repeat freeze-thaw cycles.

TARGET INFORMATION

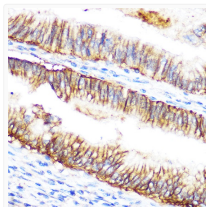
Gene ID	5894
Gene Symbol	RAF1
UniProt ID	RAF1_HUMAN
Immunogen Region	190-350
Immunogen Sequence	IRQLLLFPNSTIGDSGVPAL PSLTMRMRRESVSRMPVSSQ HRYSTPHAFTFNTSSPSSEG SLSQRQRSTSTPNVHMVSTT LPVDSRMIEDAIRSHSESAS PSALSSSPNNLSPTGWSQPK TPVPAQRERAPVSGTQEKNK IRPRGQRDSSYYWEIEASEV M
Specificity	Recombinant fusion protein containing a sequence corresponding to amino acids 190-350 of human Raf1 (NP_002871.1).

ADDITIONAL INFORMATION

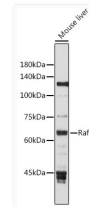
Note STRICTLY FOR FURTHER SCIENTIFIC RESEARCH USE ONLY (RUO). MUST NOT TO BE USED IN DIAGNOSTIC OR THERAPEUTIC APPLICATIONS.



Immunofluorescence analysis of PC-12 cells using Raf1 Rabbit polyclonal antibody (STJ25284) at dilution of 1:200 (40x lens). Blue: DAPI for nuclear staining.



Immunohistochemistry analysis of paraffin-embedded human colon carcinoma using Raf1 Rabbit polyclonal antibody (STJ25284) at dilution of 1:100 (40x lens). Perform microwave antigen retrieval with 10 mM Tris/EDTA buffer pH 9.0 before commencing with immunohistochemistry staining protocol.



Western blot analysis of extracts of Mouse liver, using Raf1 antibody (STJ25284) at 1:1000 dilution. Secondary antibody: HRP Goat Anti-Rabbit IgG (H+L) (STJS000856) at 1:10000 dilution. Lysates/proteins: 25 μ g per lane. Blocking buffer: 3% nonfat dry milk in TBST. Detection: ECL Basic Kit. Exposure time: 30s.