

## Anti-RAC2 antibody (1-192) (STJ25274)

### GENERAL INFORMATION

Product Type	Primary antibodies
Applications	WB/IHC-P/IF/ICC/ELISA
Host / Source	Rabbit
Reactivity	Human/Mouse/Rat

### PRODUCT PROPERTIES

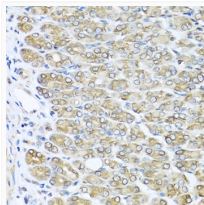
Clonality	Polyclonal
Concentration	Lot specific
Conjugation	Unconjugated
Purification	Affinity purification
Dilution Range	WB:1:500-1:2000 IHC-P:1:50-1:100 IF/CC:1:50-1:100 ELISA:Recommended starting concentration is 1 $\mu$ g/mL. Please optimize the concentration based on your specific assay requirements.
Formulation	PBS with 0.02% Sodium Azide, 50% Glycerol, pH 7.3.
Isotype	IgG
Molecular Weight	Protein Mw: 21kDa Observed Mw: 21kDa
Storage Instruction	Store at -20°C for up to 1 year from the date of receipt, and avoid repeat freeze-thaw cycles.

### TARGET INFORMATION

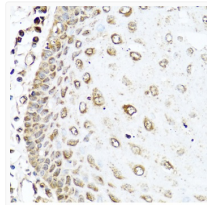
Gene ID	<a href="#">5880</a>
Gene Symbol	<a href="#">RAC2</a>
UniProt ID	<a href="#">RAC2_HUMAN</a>
Immunogen Region	1-192
Immunogen Sequence	MQAIKCVVVDGAVGKTCLL ISYTTNAFPGEYIPTVFDNY SANVMVDSKPVNGLWDTAG QEDYDRLRPLSYPQTDVFLI CFSLVSPASYENVRKWFPE VRHHCPSTPIILVGTKLDLR DDKDTIEKLKEKLPITYP QGLALAKEIDSVKYLECSAL TQRGLKTVFDEAIRAVLCPQ PTRQQKRACSLL
Specificity	A synthetic peptide corresponding to a sequence within amino acids 1-192 of human RAC2 (NP_002863.1).

### ADDITIONAL INFORMATION

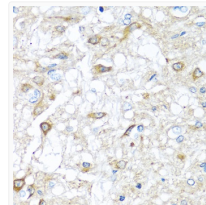
Note **STRICTLY FOR FURTHER SCIENTIFIC RESEARCH USE ONLY (RUO). MUST NOT TO BE USED IN DIAGNOSTIC OR THERAPEUTIC APPLICATIONS.**



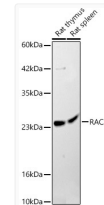
Immunohistochemistry analysis of paraffin-embedded mouse stomach using RAC2 antibody (STJ25274) at dilution of 1:100 (40x lens). Perform microwave antigen retrieval with 10 mM PBS buffer pH 7.2 before commencing with immunohistochemistry staining protocol.



Immunohistochemistry analysis of paraffin-embedded human esophagus using RAC2 antibody (STJ25274) at dilution of 1:100 (40x lens). Perform microwave antigen retrieval with 10 mM PBS buffer pH 7.2 before commencing with immunohistochemistry staining protocol.



Immunohistochemistry analysis of paraffin-embedded rat brain using RAC2 antibody (STJ25274) at dilution of 1:100 (40x lens). Perform microwave antigen retrieval with 10 mM PBS buffer pH 7.2 before commencing with immunohistochemistry staining protocol.



Western blot analysis of various lysates, using RAC2 Rabbit polyclonal antibody (STJ25274) at 1:1000 dilution. Secondary antibody: HRP Goat Anti-Rabbit IgG (H+L) (STJS000856) at 1:10000 dilution. Lysates/proteins: 25 $\mu$ g per lane. Blocking buffer: 3% nonfat dry milk in TBST. Detection: ECL Basic Kit. Exposure time: 180s.