

Anti-RAB5A antibody (1-215) (STJ25263)

GENERAL INFORMATION

Product Type	Primary antibodies
Applications	WB/IHC-P/IF/ICC/ELISA
Host / Source	Rabbit
Reactivity	Human/Mouse/Rat

PRODUCT PROPERTIES

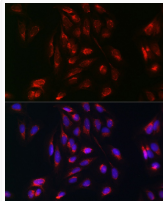
Clonality	Polyclonal
Concentration	Lot specific
Conjugation	Unconjugated
Purification	Affinity purification
Dilution Range	WB:1:500-1:1000 IHC-P:1:50-1:200 IF/CC:1:50-1:200 ELISA:Recommended starting concentration is 1 Mu g/mL. Please optimize the concentration based on your specific assay requirements.
Formulation	PBS with 0.09% Sodium Azide, 50% Glycerol, pH 7.3.
Isotype	IgG
Molecular Weight	Protein Mw: 24kDa Observed Mw: 24kDa
Storage Instruction	Store at -20°C for up to 1 year from the date of receipt, and avoid repeat freeze-thaw cycles.

TARGET INFORMATION

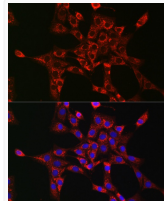
Gene ID	5868
Gene Symbol	RAB5A
UniProt ID	RAB5A_HUMAN
Immunogen Region	1-215
Immunogen Sequence	MASRGATRPNGPNTGNKICQ FKLVLGSAVGVKSSLVLRV VKGQFHEFQESTIGAAFLTQ TVCLDDTTVKFEIWDTAGQE RYHSLAPMYRGAQAIVVY DITNEESFARAKNWKELQR QASPNIVIALSGNKADLANK RAVDFQEAQSYADDNSLLFM ETSAKTSMNVNEIFMAIAKK LPKNPQNPNGANSARGRGVD LTEPTQPTRNQCCSN
Specificity	Recombinant fusion protein containing a sequence corresponding to amino acids 1-215 of human RAB5A (NP_004153.2).

ADDITIONAL INFORMATION

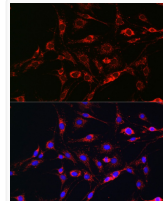
Note **STRICTLY FOR FURTHER SCIENTIFIC RESEARCH USE ONLY (RUO). MUST NOT TO BE USED IN DIAGNOSTIC OR THERAPEUTIC APPLICATIONS.**



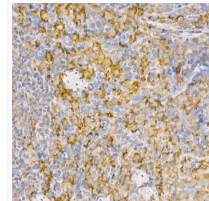
Immunofluorescence analysis of U-2 OS cells using RAB5A Rabbit polyclonal antibody (STJ25263) at dilution of 1:100 (40x lens). Blue: DAPI for nuclear staining.



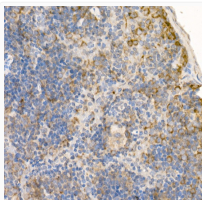
Immunofluorescence analysis of NIH-3T3 cells using RAB5A Rabbit polyclonal antibody (STJ25263) at dilution of 1:100 (40x lens). Blue: DAPI for nuclear staining.



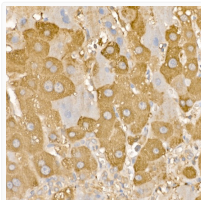
Immunofluorescence analysis of C6 cells using RAB5A Rabbit polyclonal antibody (STJ25263) at dilution of 1:100 (40x lens). Blue: DAPI for nuclear staining.



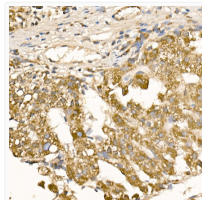
Immunohistochemistry analysis of paraffin-embedded rat spleen using RAB5A Rabbit polyclonal antibody (STJ25263) at dilution of 1:100 (40x lens). Perform high pressure antigen retrieval with 10 mM citrate buffer pH 6.0 before commencing with immunohistochemistry staining protocol.



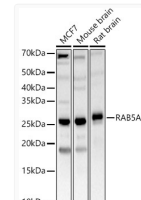
Immunohistochemistry analysis of paraffin-embedded mouse spleen using RAB5A Rabbit polyclonal antibody (STJ25263) at dilution of 1:100 (40x lens). Perform high pressure antigen retrieval with 10 mM citrate buffer pH 6.0 before commencing with immunohistochemistry staining protocol.



Immunohistochemistry analysis of paraffin-embedded human liver using RAB5A Rabbit polyclonal antibody (STJ25263) at dilution of 1:100 (40x lens). Perform high pressure antigen retrieval with 10 mM citrate buffer pH 6.0 before commencing with immunohistochemistry staining protocol.



Immunohistochemistry analysis of paraffin-embedded human liver cancer using RAB5A Rabbit polyclonal antibody (STJ25263) at dilution of 1:100 (40x lens). Perform high pressure antigen retrieval with 10 mM citrate buffer pH 6.0 before commencing with immunohistochemistry staining protocol.



Western blot analysis of various lysates, using RAB5A antibody (STJ25263) at 1:700 dilution. Secondary antibody: HRP Goat Anti-Rabbit IgG (H+L) (STJS000856) at 1:10000 dilution. Lysates/proteins: 25 Mu g per lane. Blocking buffer: 3% nonfat dry milk in TBST. Detection: ECL Basic Kit. Exposure time: 30s.