

Anti-RAB10 antibody (98-200) (STJ25252)

GENERAL INFORMATION

Product Type	Primary antibodies
Applications	WB/ELISA
Host / Source	Rabbit
Reactivity	Mouse

PRODUCT PROPERTIES

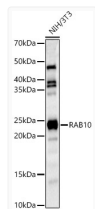
Clonality	Polyclonal
Concentration	Lot specific
Conjugation	Unconjugated
Purification	Affinity purification
Dilution Range	WB:1:500-1:2000 ELISA:Recommended starting concentration is 1 µg/mL. Please optimize the concentration based on your specific assay requirements.
Formulation	PBS with 0.02% Sodium Azide, 50% Glycerol, pH 7.3.
Isotype	IgG
Molecular Weight	Protein Mw: 23kDa Observed Mw: 23kDa
Storage Instruction	Store at -20°C for up to 1 year from the date of receipt, and avoid repeat freeze-thaw cycles.

TARGET INFORMATION

Gene ID	10890
Gene Symbol	RAB10
UniProt ID	RAB10_HUMAN
Immunogen Region	98-200
Immunogen Sequence	ENISKWLRNIDEHANEDVER MLLGNKCDMDDKRVVPGKGG EQIAREHGIRFFETSAKANI NIEKAFLTLAEDILRKTPVK EPNSENVDISSGGGVTGWKS K
Specificity	Recombinant fusion protein containing a sequence corresponding to amino acids 98-198 of human RAB10 (NP_057215.3).

ADDITIONAL INFORMATION

Note STRICTLY FOR FURTHER SCIENTIFIC RESEARCH USE ONLY (RUO). MUST NOT TO BE USED IN DIAGNOSTIC OR THERAPEUTIC APPLICATIONS.



Western blot analysis of NIH/3T3, using RAB10 Rabbit polyclonal antibody (STJ25252) at 1:1000 dilution. Secondary antibody: HRP Goat Anti-Rabbit IgG (H+L) (STJS000856) at 1:10000 dilution. Lysates/proteins: 25 µg per lane. Blocking buffer: 3% nonfat dry milk in TBST. Detection: ECL Basic Kit. Exposure time: 30s.