

Anti-PTPN2 antibody (1-353) (STJ25225)

GENERAL INFORMATION

Product Type	Primary antibodies
Applications	WB/IF/ICC/ELISA
Host / Source	Rabbit
Reactivity	Human/Mouse/Rat

PRODUCT PROPERTIES

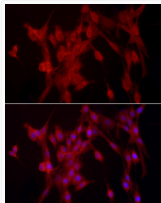
Clonality	Polyclonal
Concentration	Lot specific
Conjugation	Unconjugated
Purification	Affinity purification
Dilution Range	WB:1:500-1:1000 IF/CC:1:50-1:200 ELISA:Recommended starting concentration is 1 Mu g/mL. Please optimize the concentration based on your specific assay requirements.
Formulation	PBS with 0.05% Proclin300, 50% Glycerol, pH 7.3.
Isotype	IgG
Molecular Weight	Protein Mw: 48kDa Observed Mw: 45kDa
Storage Instruction	Store at -20°C for up to 1 year from the date of receipt, and avoid repeat freeze-thaw cycles.

TARGET INFORMATION

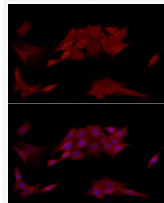
Gene ID	5771
Gene Symbol	PTPN2
UniProt ID	PTN2_HUMAN
Immunogen Region	1-353
Immunogen Sequence	MPTTIEREFEELDTQRRWQP LYLEIRNESHDPHVRVAKFP ENRRNRNRYRDVSPYDHSRVK LQNAENDYINASLVDIEEAQ RSYILTQGPLPNTCCHFVLM VWQKTKAVVMLNRIVEKES VKCAQYWPTDDQEMLFKETG FSVKLLSEDEVKSYTYVHLLQ LENINSGETRTISHFYHTTW PDFGVPEPASFLNFLFKVR ESGSLNPDHGPVIVHCSAGI GRSGTFSLVDTCLVLMKEKG
Specificity	Recombinant fusion protein containing a sequence corresponding to amino acids 1-353 of human PTPN2 (NP_536348.1).

ADDITIONAL INFORMATION

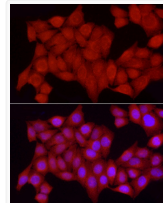
Note STRICTLY FOR FURTHER SCIENTIFIC RESEARCH USE ONLY (RUO). MUST NOT TO BE USED IN DIAGNOSTIC OR THERAPEUTIC APPLICATIONS.



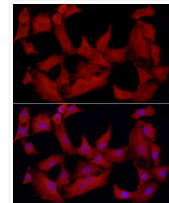
Immunofluorescence analysis of PC-12 cells using [KO Validated] PTPN2 Rabbit polyclonal antibody (STJ25225) at dilution of 1:200 (40x lens). Secondary antibody: Cy3 Goat Anti-Rabbit IgG (H+L) at 1:500 dilution. Blue: DAPI for nuclear staining.



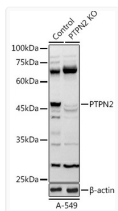
Immunofluorescence analysis of NIH/3T3 cells using [KO Validated] PTPN2 Rabbit polyclonal antibody (STJ25225) at dilution of 1:200 (40x lens). Secondary antibody: Cy3 Goat Anti-Rabbit IgG (H+L) at 1:500 dilution. Blue: DAPI for nuclear staining.



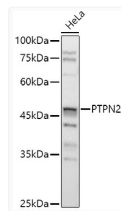
Immunofluorescence analysis of HeLa cells using [KO Validated] PTPN2 Rabbit polyclonal antibody (STJ25225) at dilution of 1:200 (40x lens). Secondary antibody: Cy3 Goat Anti-Rabbit IgG (H+L) at 1:500 dilution. Blue: DAPI for nuclear staining.



Immunofluorescence analysis of A-549 cells using [KO Validated] PTPN2 Rabbit polyclonal antibody (STJ25225) at dilution of 1:200 (40x lens). Secondary antibody: Cy3 Goat Anti-Rabbit IgG (H+L) at 1:500 dilution. Blue: DAPI for nuclear staining.



Western blot analysis of lysates from wild type (WT) and PTPN2 knockout (KO) A-549 cells, using [KO Validated] PTPN2 Rabbit polyclonal antibody (STJ25225) at 1:1000 dilution. Secondary antibody: HRP Goat Anti-Rabbit IgG (H+L) (STJS000856) at 1:10000 dilution. Lysates/proteins: 25 Mu g per lane. Blocking buffer: 3% nonfat dry milk in TBST. Detection: ECL Basic Kit. Exposure time: 3s.



Western blot analysis of lysates from HeLa cells, using [KO Validated] PTPN2 Rabbit polyclonal antibody (STJ25225) at 1:1000 dilution. Secondary antibody: HRP Goat Anti-Rabbit IgG (H+L) (STJS000856) at 1:10000 dilution. Lysates/proteins: 25 Mu g per lane. Blocking buffer: 3% nonfat dry milk in TBST. Detection: ECL Basic Kit. Exposure time: 3s.