

Anti-PSMD4 antibody (1-377) (STJ25189)

GENERAL INFORMATION

Product Type	Primary antibodies
Applications	WB/IF/ICC/IP/ELISA
Host / Source	Rabbit
Reactivity	Human/Rat

PRODUCT PROPERTIES

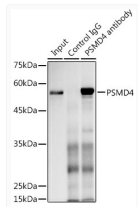
Clonality	Polyclonal
Concentration	Lot specific
Conjugation	Unconjugated
Purification	Affinity purification
Dilution Range	WB:1:500-1:2000 IF/CC:1:50-1:200 IP:0.5 Mu g-4 Mu g antibody for 200 Mu g-400 Mu g extracts of whole cells ELISA:Recommended starting concentration is 1 Mu g/mL. Please optimize the concentration based on your specific assay requirements
Formulation	PBS with 0.02% Sodium Azide, 50% Glycerol, pH 7.3.
Isotype	IgG
Molecular Weight	Protein Mw: 41kDa Observed Mw: 50kDa
Storage Instruction	Store at -20°C for up to 1 year from the date of receipt, and avoid repeat freeze-thaw cycles.

TARGET INFORMATION

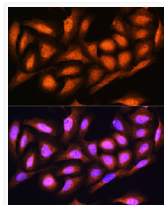
Gene ID	5710
Gene Symbol	PSMD4
UniProt ID	PSMD4_HUMAN
Immunogen Region	1-377
Immunogen Sequence	MVLESTMVCVDNSEYMRNGD FLPTRLQAQQDAVNIVCHSK TRSNPENNVLITLANDCEV LTTLTPTDTRILSKLHTVQP KGKITFCTGIRVAHLALKHR QGKNHKMRIAIFVGGSPVEDN EKDLVKLAKRLKKEKVNVDI INFGEEEVNTEKLTAFVNTL NGKDGTGSHLTVPPGPSLA DALISSPILAGEGGAMLGLG ASDFEFGVDPSPADPELALAL RVMEEQRQRQEEEARAA
Specificity	Recombinant fusion protein containing a sequence corresponding to amino acids 1-377 of human PSMD4 (NP_002801.1).

ADDITIONAL INFORMATION

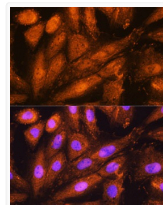
Note STRICTLY FOR FURTHER SCIENTIFIC RESEARCH USE ONLY (RUO). MUST NOT TO BE USED IN DIAGNOSTIC OR THERAPEUTIC APPLICATIONS.



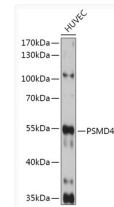
Immunoprecipitation analysis of 300 Mu g extracts of MCF7 cells using 3 Mu g PSMD4 antibody (STJ25189). Western blot was performed from the immunoprecipitate using PSMD4 antibody (STJ25189) at a dilution of 1:1000.



Immunofluorescence analysis of U2OS cells using PSMD4 Rabbit polyclonal antibody (STJ25189) at dilution of 1:100. Secondary antibody: Cy3 Goat Anti-Rabbit IgG (H+L) at 1:500 dilution. Blue: DAPI for nuclear staining.



Immunofluorescence analysis of H9C2 cells using PSMD4 Rabbit polyclonal antibody (STJ25189) at dilution of 1:100. Secondary antibody: Cy3 Goat Anti-Rabbit IgG (H+L) at 1:500 dilution. Blue: DAPI for nuclear staining.



Western blot analysis of lysates from HUVEC cells, using PSMD4 Rabbit polyclonal antibody (STJ25189) at 1:1000 dilution. Secondary antibody: HRP Goat Anti-Rabbit IgG (H+L) (STJS000856) at 1:10000 dilution. Lysates/proteins: 25 Mu g per lane. Blocking buffer: 3% nonfat dry milk in TBST. Detection: ECL Basic Kit. Exposure time: 90s.