

Anti-PSMC5 antibody (127-406) (STJ25184)

GENERAL INFORMATION

| | |
|---------------|--------------------|
| Product Type | Primary antibodies |
| Applications | WB/IF/ICC/ELISA |
| Host / Source | Rabbit |
| Reactivity | Human/Mouse/Rat |

PRODUCT PROPERTIES

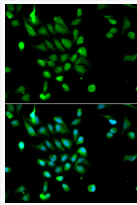
| | |
|---------------------|---|
| Clonality | Polyclonal |
| Concentration | Lot specific |
| Conjugation | Unconjugated |
| Purification | Affinity purification |
| Dilution Range | WB:1:500-1:2000 IF/CC:1:50-1:200 ELISA:Recommended starting concentration is 1 μ g/mL. Please optimize the concentration based on your specific assay requirements. |
| Formulation | PBS with 0.02% Sodium Azide, 50% Glycerol, pH 7.3. |
| Isotype | IgG |
| Molecular Weight | Protein Mw: 46kDa Observed Mw: 46kDa |
| Storage Instruction | Store at -20°C for up to 1 year from the date of receipt, and avoid repeat freeze-thaw cycles. |

TARGET INFORMATION

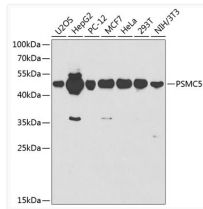
| | |
|--------------------|--|
| Gene ID | 5705 |
| Gene Symbol | PSMC5 |
| UniProt ID | PRS8_HUMAN |
| Immunogen Region | 127-406 |
| Immunogen Sequence | LPNKVDPLVSLMMVEKVPDS TYEMIGGLDKQIKEIKEVIE LPVKHPELFEALGIAQPKGVL LLYGPPGTGKTLARAVAHH TDCTFIRVSGSELVQKFIGE GARMVREL FVMAREHAPSII FMDEIDSIGSSRLEGGSGGD SEVQRTMLELLNQLDGFEAT KNIKVIMATNRIDILDSALL RPGRIDRKIEFPPPNEEARL DILKIHSRKMNLTRGINLRK IAELMPGASGAEVKGVCTE |
| Specificity | Recombinant fusion protein containing a sequence corresponding to amino acids 127-406 of human PSMC5 (NP_002796.4). |

ADDITIONAL INFORMATION

Note STRICTLY FOR FURTHER SCIENTIFIC RESEARCH USE ONLY (RUO). MUST NOT TO BE USED IN DIAGNOSTIC OR THERAPEUTIC APPLICATIONS.



Immunofluorescence analysis of MCF-7 cells using PSMC5 antibody (STJ25184). Blue: DAPI for nuclear staining.



Western blot analysis of extracts of various cell lines, using PSMC5 antibody (STJ25184) at 1:1000 dilution. Secondary antibody: HRP Goat Anti-Rabbit IgG (H+L) (STJS000856) at 1:10000 dilution. Lysates/proteins: 25 μ g per lane. Blocking buffer: 3% nonfat dry milk in TBST.