

Anti-PSMB6 antibody (35-239) (STJ25177)

GENERAL INFORMATION

Product Type	Primary antibodies
Applications	WB/IHC-P/IF/ICC/ELISA
Host / Source	Rabbit
Reactivity	Human/Mouse/Rat

PRODUCT PROPERTIES

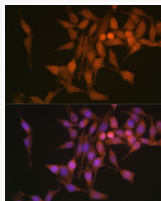
Clonality	Polyclonal
Concentration	Lot specific
Conjugation	Unconjugated
Purification	Affinity purification
Dilution Range	WB:1:500-1:1000 IHC-P:1:50-1:100 IF/ICC:1:50-1:100 ELISA:Recommended starting concentration is 1 Mu g/mL. Please optimize the concentration based on your specific assay requirements.
Formulation	PBS with 0.05% Proclin300, 50% Glycerol, pH 7.3.
Isotype	IgG
Molecular Weight	Protein Mw: 25kDa Observed Mw: 22kDa
Storage Instruction	Store at -20°C for up to 1 year from the date of receipt, and avoid repeat freeze-thaw cycles.

TARGET INFORMATION

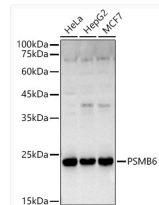
Gene ID	5694
Gene Symbol	PSMB6
UniProt ID	PSB6_HUMAN
Immunogen Region	35-239
Immunogen Sequence	TTIMAVQFGDGGVVLGADSRT TTGSYIANRVTDKLTPIHDR IFCCRSGSAADTQAVADAVT YQLGFHSELNEPPLVHTAA SLFKEMCYRYREDLMAGIII AGWDPQEGGQVYSVPMGGMM VRQSF AIGGSGSSYIYGYVD ATYREGMTKEECLQFTANAL ALAMERDGSSGGVIRLAAIA ESGVERQVLLGDQIPKFAVA TLPPA
Specificity	Recombinant fusion protein containing a sequence corresponding to amino acids 35-239 of human PSMB6 (NP_002789.1).

ADDITIONAL INFORMATION

Note STRICTLY FOR FURTHER SCIENTIFIC RESEARCH USE ONLY (RUO). MUST NOT TO BE USED IN DIAGNOSTIC OR THERAPEUTIC APPLICATIONS.



Immunofluorescence analysis of HeLa cells using PSMB6 Rabbit polyclonal antibody (STJ25177) at dilution of 1:100 (40x lens). Secondary antibody: Cy3 Goat Anti-Rabbit IgG (H+L) at 1:500 dilution. Blue: DAPI for nuclear staining.



Western blot analysis of various lysates, using PSMB6 Rabbit polyclonal antibody (STJ25177) at 1:1000 dilution. Secondary antibody: HRP Goat Anti-Rabbit IgG (H+L) (STJS000856) at 1:10000 dilution. Lysates/proteins: 25 Mu g per lane. Blocking buffer: 3% nonfat dry milk in TBST. Detection: ECL Basic Kit. Exposure time: 10s.