

Anti-PRNP antibody (23-230) (STJ25153)

GENERAL INFORMATION

Product Type	Primary antibodies
Applications	WB/ELISA
Host / Source	Rabbit
Reactivity	Human/Mouse

PRODUCT PROPERTIES

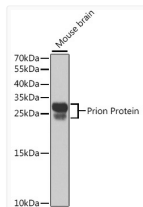
Clonality	Polyclonal
Concentration	Lot specific
Conjugation	Unconjugated
Purification	Affinity purification
Dilution Range	WB:1:500-1:1000 ELISA:Recommended starting concentration is 1 µg/mL. Please optimize the concentration based on your specific assay requirements.
Formulation	PBS with 0.02% Sodium Azide, 50% Glycerol, pH 7.3.
Isotype	IgG
Molecular Weight	Protein Mw: 28kDa Observed Mw: 28kDa
Storage Instruction	Store at -20°C for up to 1 year from the date of receipt, and avoid repeat freeze-thaw cycles.

TARGET INFORMATION

Gene ID	5621
Gene Symbol	PRNP
UniProt ID	PRIO_HUMAN
Immunogen Region	23-230
Immunogen Sequence	KKRPKPGGWNTGGSRYPGQG SPGGNRYPPQGGGGWGQPHG GGWGQPHGGGWGQPHGGGWG QPHGGGWGQGGGTHSQWNKP SKPKTNMKHMAGAAAAGAVV GGLGGYMLGSAMSRPIHFG SDYEDRYRENMHRYPNQVY YRPMDEYSNQNNFVHDCVNI TIKQHTVTTTTKGENFTETD VKMMERVVEQMCITQYERES QAYYQRGS
Specificity	Recombinant fusion protein containing a sequence corresponding to amino acids 23-230 of human Prion Protein (NP_001073592.1).

ADDITIONAL INFORMATION

Note STRICTLY FOR FURTHER SCIENTIFIC RESEARCH USE ONLY (RUO). MUST NOT TO BE USED IN DIAGNOSTIC OR THERAPEUTIC APPLICATIONS.



Western blot analysis of extracts of mouse brain, using Prion Protein antibody (STJ25153) at 1:1000 dilution. Secondary antibody: HRP Goat Anti-rabbit IgG (H+L) at 1:10000 dilution. Lysates/proteins: 25µg per lane. Blocking buffer: 3% non-fat dry milk in TBST. Detection: ECL Basic Kit. Exposure time: 5s.