

Anti-PRKAR1A antibody (1-250) (STJ25122)

GENERAL INFORMATION

Product Type	Primary antibodies
Applications	WB/IF/ICC/ELISA
Host / Source	Rabbit
Reactivity	Human/Mouse/Rat

PRODUCT PROPERTIES

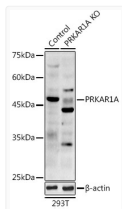
Clonality	Polyclonal
Concentration	Lot specific
Conjugation	Unconjugated
Purification	Affinity purification
Dilution Range	WB:1:500-1:1000 IF/CC:1:50-1:200 ELISA:Recommended starting concentration is 1 μ g/mL. Please optimize the concentration based on your specific assay requirements.
Formulation	PBS with 0.02% Sodium Azide, 50% Glycerol, pH7.3.
Isotype	IgG
Molecular Weight	Protein Mw: 43kDa Observed Mw: 48kDa
Storage Instruction	Store at -20°C for up to 1 year from the date of receipt, and avoid repeat freeze-thaw cycles.

TARGET INFORMATION

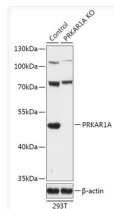
Gene ID	5573
Gene Symbol	PRKAR1A
UniProt ID	KAPO_HUMAN
Immunogen Region	1-250
Immunogen Sequence	MESGSTAASEEARSLRECEL YVQKHNIQALLKDSIVQLCT ARPERPMAFLREYFERLEKE EAKQIQNLQKAGTRTDSRED EISPPPPNPVVKGRRRRRGA I SAEVYTEEDAASYVRKVIPIK DYKTMAALAKAIEKNVLFSL LDDNERSDIFDAMFSVSFIA GETVIQQGDEGDNFYVIDQG ETDVYVNNNEWATSVGEGGSF GELALIIYGT PRAATVKAKTN VKLWGI DRDSYRRILMGST
Specificity	Recombinant fusion protein containing a sequence corresponding to amino acids 1-250 of human PRKAR1A (NP_002725.1).

ADDITIONAL INFORMATION

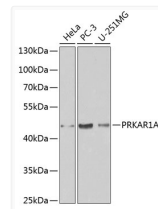
Note **STRICTLY FOR FURTHER SCIENTIFIC RESEARCH USE ONLY (RUO). MUST NOT TO BE USED IN DIAGNOSTIC OR THERAPEUTIC APPLICATIONS.**



Western blot analysis of extracts from normal (control) and PRKAR1A knockout (KO) 293T cells, using PRKAR1A antibody (STJ25122) at 1:1000 dilution. Secondary antibody: HRP Goat Anti-Rabbit IgG (H+L) (STJS000856) at 1:10000 dilution. Lysates/proteins: 25 μ g per lane. Blocking buffer: 3% nonfat dry milk in TBST. Detection: ECL Enhanced Kit. Exposure time: 180s.



Western blot analysis of extracts from normal (control) and PRKAR1A knockout (KO) 293T cells, using PRKAR1A antibody (STJ25122) at 1:500 dilution. Secondary antibody: HRP Goat Anti-Rabbit IgG (H+L) (STJS000856) at 1:10000 dilution. Lysates/proteins: 25 μ g per lane. Blocking buffer: 3% nonfat dry milk in TBST. Detection: ECL Basic Kit. Exposure time: 5s.



Western blot analysis of extracts of various cell lines, using PRKAR1A antibody (STJ25122) at 1:1000 dilution. Secondary antibody: HRP Goat Anti-Rabbit IgG (H+L) (STJS000856) at 1:10000 dilution. Lysates/proteins: 25 μ g per lane. Blocking buffer: 3% nonfat dry milk in TBST.