

## Anti-PRF1 antibody (280-555) (STJ25109)

### GENERAL INFORMATION

Product Type	Primary antibodies
Applications	WB/IHC-P/IF/ICC/ELISA
Host / Source	Rabbit
Reactivity	Human/Mouse/Rat

### PRODUCT PROPERTIES

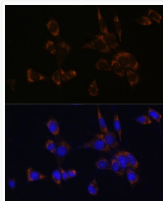
Clonality	Polyclonal
Concentration	Lot specific
Conjugation	Unconjugated
Purification	Affinity purification
Dilution Range	WB:1:500-1:1000 IHC-P:1:50-1:200 IF/ICC:1:50-1:200 ELISA:Recommended starting concentration is 1 $\mu$ g/mL. Please optimize the concentration based on your specific assay requirements.
Formulation	PBS with 0.09% Sodium Azide, 50% Glycerol, pH 7.3.
Isotype	IgG
Molecular Weight	Protein Mw: 61kDa Observed Mw: 70kDa/61kDa
Storage Instruction	Store at -20°C for up to 1 year from the date of receipt, and avoid repeat freeze-thaw cycles.

### TARGET INFORMATION

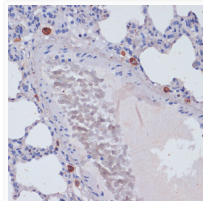
Gene ID	<a href="#">5551</a>
Gene Symbol	<a href="#">PRF1</a>
UniProt ID	<a href="#">PERF_HUMAN</a>
Immunogen Region	280-555
Immunogen Sequence	EEKKKKHKMTASFHQTYRER HSEVVGGHHTSINDLLFGIQ AGPEQYSAWVNSLPGSPGLV DYTLEPLHVLVLDSDPPREA LRRALSQYLTDRARWRDCSR PCPPGRQKSPRDPCQCVCVCHG SAVTTQDCPCRQRGLAQLEV TFIQAWGLWGDWFTATDAYV KLFFGGQELRTSTVVDNINNP IWSVRLDFGDVLLATGGPLR LQVWDQDSGRDDLLGTCDQ APKSGSHEVRCNLNHGHK
Specificity	Recombinant fusion protein containing a sequence corresponding to amino acids 280-555 of human Perforin (NP_005032.2).

### ADDITIONAL INFORMATION

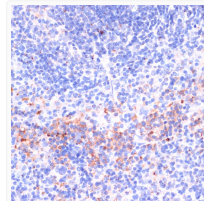
Note **STRICTLY FOR FURTHER SCIENTIFIC RESEARCH USE ONLY (RUO). MUST NOT TO BE USED IN DIAGNOSTIC OR THERAPEUTIC APPLICATIONS.**



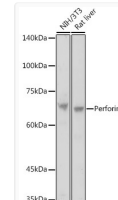
Immunofluorescence analysis of NIH/3T3 cells using Perforin antibody (STJ25109) at dilution of 1:100. Blue: DAPI for nuclear staining.



Immunohistochemistry analysis of paraffin-embedded rat lung using Perforin antibody (STJ25109) at dilution of 1:100 (40x lens). Perform microwave antigen retrieval with 10 mM PBS buffer pH 7.2 before commencing with immunohistochemistry staining protocol.



Immunohistochemistry analysis of paraffin-embedded mouse spleen using Perforin antibody (STJ25109) at dilution of 1:100 (40x lens). Perform microwave antigen retrieval with 10 mM PBS buffer pH 7.2 before commencing with immunohistochemistry staining protocol.



Western blot analysis of extracts of various cell lines, using Perforin antibody (STJ25109) at 1:1000 dilution. Secondary antibody: HRP Goat Anti-Rabbit IgG (H+L) (STJS000856) at 1:10000 dilution. Lysates/proteins: 25  $\mu$ g per lane. Blocking buffer: 3% nonfat dry milk in TBST. Detection: ECL Basic Kit. Exposure time: 30s.