

Anti-PRDX6 antibody (1-224) (STJ25108)

GENERAL INFORMATION

Product Type	Primary antibodies
Applications	WB/IHC-P/IF/ICC/ELISA
Host / Source	Rabbit
Reactivity	Human/Mouse/Rat

PRODUCT PROPERTIES

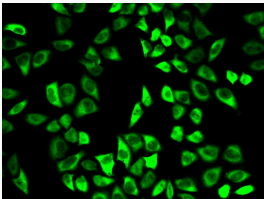
Clonality	Polyclonal
Concentration	Lot specific
Conjugation	Unconjugated
Purification	Affinity purification
Dilution Range	WB:1:500-1:1000 IHC-P:1:50-1:200 IF/ICC:1:50-1:200 ELISA:Recommended starting concentration is 1 Mu g/mL. Please optimize the concentration based on your specific assay requirements.
Formulation	PBS with 0.09% Sodium Azide, 50% Glycerol, pH 7.3.
Isotype	IgG
Molecular Weight	Protein Mw: 25kDa Observed Mw: 27kDa
Storage Instruction	Store at -20°C for up to 1 year from the date of receipt, and avoid repeat freeze-thaw cycles.

TARGET INFORMATION

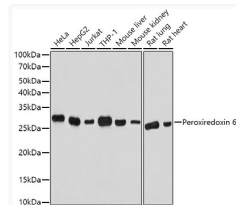
Gene ID	9588
Gene Symbol	PRDX6
UniProt ID	PRDX6_HUMAN
Immunogen Region	1-224
Immunogen Sequence	MPGGLLLGDVAPNFEANTTV GRIRFHDFLGDSWGILFSHP RDFTPVCTTELGRAAKLAPE FAKRNVKLIALSIDSVEDHL AWSKDINAYNCEEPTEKLPF PIIDDRNRELAILLGMLDPA EKDEKGMPTARVVFVFGPD KKLKLSILYPATTGRNFDEI LRVVISLQLTAEKRVATPVD WKDGD SVMVLP TPIEEEAKK LFPKGVFTKELPSGKKYLRY TPQP
Specificity	Recombinant fusion protein containing a sequence corresponding to amino acids 1-224 of human Peroxiredoxin 6 (NP_004896.1).

ADDITIONAL INFORMATION

Note STRICTLY FOR FURTHER SCIENTIFIC RESEARCH USE ONLY (RUO). MUST NOT TO BE USED IN DIAGNOSTIC OR THERAPEUTIC APPLICATIONS.



Immunofluorescence analysis of HeLa cells using Peroxiredoxin 6 antibody (STJ25108).



Western blot analysis of extracts of various cell lines, using Peroxiredoxin 6 antibody (STJ25108) at 1:1000 dilution. Secondary antibody: HRP Goat Anti-Rabbit IgG (H+L) (STJS000856) at 1:10000 dilution. Lysates/proteins: 25 Mu g per lane. Blocking buffer: 3% nonfat dry milk in TBST. Detection: ECL Basic Kit. Exposure time: 30s.