

## Anti-PPP4C antibody (1-307) (STJ25096)

### GENERAL INFORMATION

Product Type	Primary antibodies
Applications	WB/IHC-P/IP/ELISA
Host / Source	Rabbit
Reactivity	Human/Mouse/Rat

### PRODUCT PROPERTIES

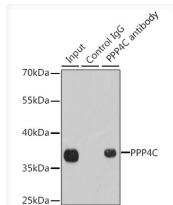
Clonality	Polyclonal
Concentration	Lot specific
Conjugation	Unconjugated
Purification	Affinity purification
Dilution Range	WB:1:500-1:2000 IHC-P:1:50-1:200 IP:0.5 Mu g-4 Mu g antibody for 200 Mu g-400 Mu g extracts of whole cells ELISA:Recommended starting concentration is 1 Mu g/mL. Please optimize the concentration based on your specific assay requirements.
Formulation	PBS with 0.02% Sodium Azide, 50% Glycerol, pH 7.3.
Isotype	IgG
Molecular Weight	Protein Mw: 35kDa Observed Mw: 36kDa
Storage Instruction	Store at -20°C for up to 1 year from the date of receipt, and avoid repeat freeze-thaw cycles.

### TARGET INFORMATION

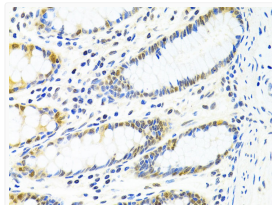
Gene ID	<a href="#">5531</a>
Gene Symbol	<a href="#">PPP4C</a>
UniProt ID	<a href="#">PP4C_HUMAN</a>
Immunogen Region	1-307
Immunogen Sequence	MAEISDLDRQIEQLRRCLEI KESEVKALCAKAREILVEES NVQRVDSPTVCGDIHGQFY DLKELFRVGGDVPETNYLFM GDFVDRGFYSVETFLLLLAL KVRYPDRITLIRGNHESRQI TQVYGFYDECLRKYGSVTWV RYCTEIFDYLSLSAIDGKI FCVHGGGLSPSIQTLTDQIRTI DRKQEVPHDGPMDLLWSDP EDTTGWGVSPRGAGYLFSGSD VVAQFNAANDIDMICRAHQ
Specificity	Recombinant fusion protein containing a sequence corresponding to amino acids 1-307 of human PPP4C (NP_002711.1).

### ADDITIONAL INFORMATION

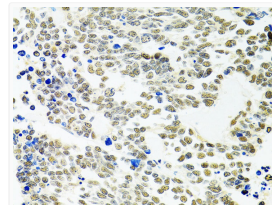
Note STRICTLY FOR FURTHER SCIENTIFIC RESEARCH USE ONLY (RUO). MUST NOT TO BE USED IN DIAGNOSTIC OR THERAPEUTIC APPLICATIONS.



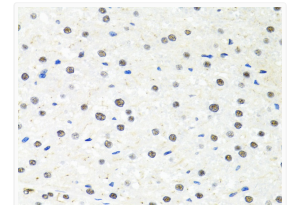
Immunoprecipitation analysis of 200 Mu g extracts of 293T cells using 1 Mu g PPP4C antibody (STJ25096). Western blot was performed from the immunoprecipitate using PPP4C antibody (STJ25096) at a dilution of 1:1000.



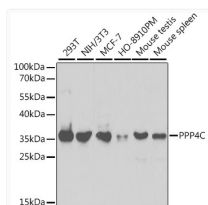
Immunohistochemistry analysis of PPP4C in paraffin-embedded human colon using PPP4C Rabbit polyclonal antibody (STJ25096) at dilution of 1:100 (40x lens). Perform microwave antigen retrieval with 10 mM PBS buffer pH 7. 2 before commencing with immunohistochemistry staining protocol.



Immunohistochemistry analysis of PPP4C in paraffin-embedded human lung cancer using PPP4C Rabbit polyclonal antibody (STJ25096) at dilution of 1:100 (40x lens). Perform microwave antigen retrieval with 10 mM PBS buffer pH 7. 2 before commencing with immunohistochemistry staining protocol.



Immunohistochemistry analysis of PPP4C in paraffin-embedded rat liver using PPP4C Rabbit polyclonal antibody (STJ25096) at dilution of 1:100 (40x lens). Perform microwave antigen retrieval with 10 mM PBS buffer pH 7. 2 before commencing with immunohistochemistry staining protocol.



Western blot analysis of various lysates using PPP4C Rabbit polyclonal antibody (STJ25096) at 1:1000 dilution. Secondary antibody: HRP Goat Anti-Rabbit IgG (H+L) (STJS000856) at 1:10000 dilution. Lysates/proteins: 25 Mu g per lane. Blocking buffer: 3% nonfat dry milk in TBST.