

Anti-PPP2R4 antibody (1-323) (STJ25089)

GENERAL INFORMATION

Product Type	Primary antibodies
Applications	WB/IF/ICC/ELISA
Host / Source	Rabbit
Reactivity	Human/Mouse/Rat

PRODUCT PROPERTIES

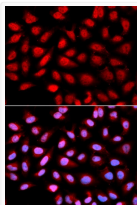
Clonality	Polyclonal
Concentration	Lot specific
Conjugation	Unconjugated
Purification	Affinity purification
Dilution Range	WB:1:1000-1:6000 IF/CC:1:50-1:200 ELISA:Recommended starting concentration is 1 Mu g/mL. Please optimize the concentration based on your specific assay requirements.
Formulation	PBS with 0.02% Sodium Azide, 50% Glycerol, pH 7.3.
Isotype	IgG
Molecular Weight	Protein Mw: 41kDa Observed Mw: 41kDa
Storage Instruction	Store at -20°C for up to 1 year from the date of receipt, and avoid repeat freeze-thaw cycles.

TARGET INFORMATION

Gene ID	5524
Gene Symbol	PTPA
UniProt ID	PTPA_HUMAN
Immunogen Region	1-323
Immunogen Sequence	MAEGERQPPPSSEEAPPAT QNFIIPKKEIHTVPDMGKWK RSQAYADYIGFILTLNEGVK GKKLTFFEYRVSEAIKLV LNTLDRWIDETPPVDQPSRF GNKAYRTWYAKLDEEAENLV ATVVPTHLAAAVPEVAVYLK ESVGNSTRIDYGTGHEAAFA AFLCCLCKIGVLRVDDQIAI VFKVFNRYLEV MRKLQKTYR MEPAGSQGVWGLDDFQFLPF IWGSSQLIDHPYLEPRHFV
Specificity	Recombinant fusion protein containing a sequence corresponding to amino acids 1-323 of human Ser/thr-PP2A activator (PTPA) (NP_821067.1).

ADDITIONAL INFORMATION

Note	STRICTLY FOR FURTHER SCIENTIFIC RESEARCH USE ONLY (RUO). MUST NOT TO BE USED IN DIAGNOSTIC OR THERAPEUTIC APPLICATIONS.
------	---



Immunofluorescence analysis of U2OS cells using Ser/thr-PP2A activator (PTPA) antibody (STJ25089). Blue: DAPI for nuclear staining.