

## Anti-PPARG antibody (115-132) (STJ25069)

### GENERAL INFORMATION

Product Type	Primary antibodies
Applications	IHC-P/IF/ICC/ELISA
Host / Source	Rabbit
Reactivity	Human/Mouse/Rat

### PRODUCT PROPERTIES

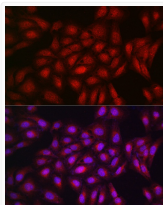
Clonality	Polyclonal
Concentration	Lot specific
Conjugation	Unconjugated
Purification	Affinity purification
Dilution Range	IHC-P:1:50-1:200 IF/CC:1:50-1:200 ELISA:Recommended starting concentration is 1 µg/mL. Please optimize the concentration based on your specific assay requirements.
Formulation	PBS with 0.01% Thimerosal, 50% Glycerol, pH 7.3.
Isotype	IgG
Molecular Weight	Protein Mw: 58kDa Observed Mw: 57kDa
Storage Instruction	Store at -20°C for up to 1 year from the date of receipt, and avoid repeat freeze-thaw cycles.

### TARGET INFORMATION

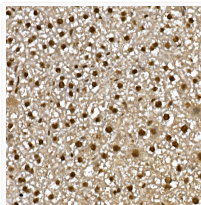
Gene ID	<a href="#">5468</a>
Gene Symbol	<a href="#">PPARG</a>
UniProt ID	<a href="#">PPARG_HUMAN</a>
Immunogen Region	115-132
Immunogen Sequence	QEYQSAIKVEPASPPYYSEK TQLYNKPHEEPSNSLMAIEC RVC GDKASGFHYGVHACEGC KGFRRRTIRLKLIDRCDLN CRIHKKSRNKCCYCRFQKCL AVGMSHNAIRFGRMPQAEKE KLLAEISSDIDQLNPESADL RALAKHLYDSYIKSFPLTKA KARAILTGKTTDKSPFVIYD MNSLMMGEDKIKFKHITPLQ
Specificity	A synthetic peptide corresponding to a sequence within amino acids 100-200 of human PPAR Gamma (NP_056953.2).

### ADDITIONAL INFORMATION

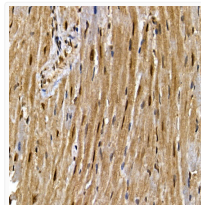
Note **STRICTLY FOR FURTHER SCIENTIFIC RESEARCH USE ONLY (RUO). MUST NOT TO BE USED IN DIAGNOSTIC OR THERAPEUTIC APPLICATIONS.**



Immunofluorescence analysis of U2OS cells using PPAR Gamma Rabbit polyclonal antibody (STJ25069) at dilution of 1:200 (40x lens). Secondary antibody: Cy3 Goat Anti-Rabbit IgG (H+L) at 1:500 dilution. Blue: DAPI for nuclear staining.



Immunohistochemistry analysis of PPAR Gamma in paraffin-embedded mouse liver using PPAR Gamma Rabbit polyclonal antibody (STJ25069) at dilution of 1:200 (40x lens). Perform high pressure antigen retrieval with 10 mM citrate buffer pH 6.0 before commencing with immunohistochemistry staining protocol.



Immunohistochemistry analysis of PPAR Gamma in paraffin-embedded mouse heart using PPAR Gamma Rabbit polyclonal antibody (STJ25069) at dilution of 1:200 (40x lens). Perform high pressure antigen retrieval with 10 mM citrate buffer pH 6.0 before commencing with immunohistochemistry staining protocol.