

Anti-POLR2C antibody (1-275) (STJ25046)

GENERAL INFORMATION

Product Type	Primary antibodies
Applications	WB/IP/ELISA
Host / Source	Rabbit
Reactivity	Human/Mouse

PRODUCT PROPERTIES

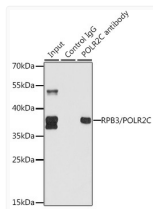
Clonality	Polyclonal
Concentration	Lot specific
Conjugation	Unconjugated
Purification	Affinity purification
Dilution Range	WB:1:500-1:2000 IP:0.5 Mu g-4 Mu g antibody for 200 Mu g-400 Mu g extracts of whole cells ELISA:Recommended starting concentration is 1 Mu g/mL. Please optimize the concentration based on your specific assay requirements.
Formulation	PBS with 0.02% Sodium Azide, 50% Glycerol, pH 7.3.
Isotype	IgG
Molecular Weight	Protein Mw: 31kDa Observed Mw: 38kDa
Storage Instruction	Store at -20°C for up to 1 year from the date of receipt, and avoid repeat freeze-thaw cycles.

TARGET INFORMATION

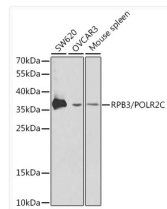
Gene ID	5432
Gene Symbol	POLR2C
UniProt ID	RPB3_HUMAN
Immunogen Region	1-275
Immunogen Sequence	MPYANQPTVRITELTDENVK FIIENTDLAVANSIRRVFIA EVPIIADWVQIDANSSVLH DEFIAHRLGLIPLISDDIVD KLYSRDCTCEEFCPECSVE FTLDVRCNEDQTRHVTSRDL ISNSPRVIPVTSRNRDNDPN DYVEQDDILIVKLRKGQELR LRAYAKKGGFGKEHAKWNPTA GVAFEYDPDNALRHTVYPKP EEWPKSEYSELDEDESQAPY DPNGKPERFYNNVESCGLS
Specificity	Recombinant fusion protein containing a sequence corresponding to amino acids 1-275 of human RPB3/POLR2C (NP_116558.1).

ADDITIONAL INFORMATION

Note **STRICTLY FOR FURTHER SCIENTIFIC RESEARCH USE ONLY (RUO). MUST NOT TO BE USED IN DIAGNOSTIC OR THERAPEUTIC APPLICATIONS.**



Immunoprecipitation analysis of 150 Mu g extracts of SW620 cells using 3 Mu g RPB3/POLR2C antibody (STJ25046). Western blot was performed from the immunoprecipitate using RPB3/POLR2C antibody (STJ25046) at a dilution of 1:500.



Western blot analysis of various lysates using RPB3/POLR2C Rabbit polyclonal antibody (STJ25046) at 1:1000 dilution. Secondary antibody: HRP Goat Anti-Rabbit IgG (H+L) (STJS000856) at 1:10000 dilution. Lysates/proteins: 25 Mu g per lane. Blocking buffer: 3% nonfat dry milk in TBST.