

Anti-PLCB1 antibody (917-1216) (STJ25023)

GENERAL INFORMATION

Product Type	Primary antibodies
Applications	WB/IHC-P/ELISA
Host / Source	Rabbit
Reactivity	Human/Mouse/Rat

PRODUCT PROPERTIES

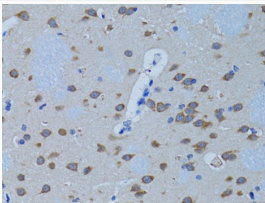
Clonality	Polyclonal
Concentration	Lot specific
Conjugation	Unconjugated
Purification	Affinity purification
Dilution Range	WB:1:500-1:2000 IHC-P:1:50-1:200 ELISA:Recommended starting concentration is 1 μ g/mL. Please optimize the concentration based on your specific assay requirements.
Formulation	PBS with 0.02% Sodium Azide, 50% Glycerol, pH 7.3.
Isotype	IgG
Molecular Weight	Protein Mw: 139kDa Observed Mw: 150kDa
Storage Instruction	Store at -20°C for up to 1 year from the date of receipt, and avoid repeat freeze-thaw cycles.

TARGET INFORMATION

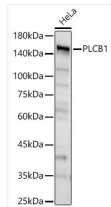
Gene ID	23236
Gene Symbol	PLCB1
UniProt ID	PLCB1_HUMAN
Immunogen Region	917-1216
Immunogen Sequence	KSFVKLQKKHYKEMKDLVKR HHKTTDLIKEHTTKYNEIQ NDYLRRRAALEKSAKKDSKK KSEFSSPDHGSSTIEQDLAA LDAEMTQKLIDLKDKQQQL LNLRQEQYYSEKYQKREHIK LLIQKLTDAEECCNNQLKK LKEICEKEKELKKMDKRR QEKITEAKSKDKSQMEEEEKT EMIRSYIQEVVQYIKRLEEA QSKRQEKLVKHKHEIRQQIL DEKPKLQVELEQEQYQDKFK
Specificity	Recombinant fusion protein containing a sequence corresponding to amino acids 917-1216 of human PLCB1 (NP_056007.1).

ADDITIONAL INFORMATION

Note STRICTLY FOR FURTHER SCIENTIFIC RESEARCH USE ONLY (RUO). MUST NOT TO BE USED IN DIAGNOSTIC OR THERAPEUTIC APPLICATIONS.



Immunohistochemistry analysis of PLCB1 in paraffin-embedded rat brain using PLCB1 Rabbit polyclonal antibody (STJ25023) at dilution of 1:100 (40x lens). Perform microwave antigen retrieval with 10 mM PBS buffer pH 7.2 before commencing with immunohistochemistry staining protocol.



Western blot analysis of lysates from HeLa cells using PLCB1 Rabbit polyclonal antibody (STJ25023) at 1:500 dilution. Secondary antibody: HRP Goat Anti-Rabbit IgG (H+L) (STJS000856) at 1:10000 dilution. Lysates/proteins: 25 μ g per lane. Blocking buffer: 3% nonfat dry milk in TBST. Detection: ECL Basic Kit. Exposure time: 60s.