

## Anti-PKM antibody (11-221) (STJ25012)

### GENERAL INFORMATION

Product Type	Primary antibodies
Applications	WB/IF/ICC/ELISA
Host / Source	Rabbit
Reactivity	Human/Mouse/Rat

### PRODUCT PROPERTIES

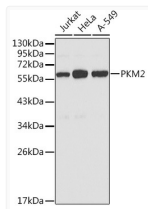
Clonality	Polyclonal
Concentration	Lot specific
Conjugation	Unconjugated
Purification	Affinity purification
Dilution Range	WB:1:500-1:2000 IF/CC:1:50-1:200 ELISA:Recommended starting concentration is 1 Mu g/mL. Please optimize the concentration based on your specific assay requirements.
Formulation	PBS with 0.02% Sodium Azide, 50% Glycerol, pH 7.3.
Isotype	IgG
Molecular Weight	Protein Mw: 58kDa Observed Mw: 62kDa
Storage Instruction	Store at -20°C for up to 1 year from the date of receipt, and avoid repeat freeze-thaw cycles.

### TARGET INFORMATION

Gene ID	<a href="#">5315</a>
Gene Symbol	<a href="#">PKM</a>
UniProt ID	<a href="#">KPYM_HUMAN</a>
Immunogen Region	11-221
Immunogen Sequence	SEAGTAFIQTQQLHAAMADT FLEHMCRLDIDSPPIARNT GIICTIGPASRSVETLKEMI KSGMNVARLNFSGHGTHEYHA ETIKNVRTATESFASDPILY RPYVAVALDTKGPEIRTKLIK GSGTAEVELKKGATLKITLD NAYMEKCDENILWLDYKNIC KVVEVGSKIYVDDGLISLQV KQKGADFLVTEVENGGSLGS KKGVNLPAAV
Specificity	Recombinant fusion protein containing a sequence corresponding to amino acids 11-221 of PKM2 (NP_001193728.1).

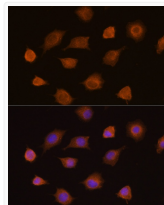
### ADDITIONAL INFORMATION

Note **STRICTLY FOR FURTHER SCIENTIFIC RESEARCH USE ONLY (RUO). MUST NOT TO BE USED IN DIAGNOSTIC OR THERAPEUTIC APPLICATIONS.**



Western blot analysis of various lysates using PKM2 Rabbit pAb (STJ25012) at 1:1000 dilution. Secondary antibody: HRP-conjugated Goat anti-Rabbit IgG (H+L) (STJS000856) at 1:10000 dilution.

Lysates/proteins: 25 Mu g per lane.  
Blocking buffer: 3% nonfat dry milk in TBST.



Immunofluorescence analysis of L929 cells using PKM2 Rabbit pAb (STJ25012) at dilution of 1:100 (40x lens). Secondary antibody: Cy3-conjugated Goat anti-Rabbit IgG (H+L) (STJS001166) at 1:500 dilution. Blue: DAPI for nuclear staining.