

Anti-Piwil1 antibody (1-862) (STJ25007)

GENERAL INFORMATION

Product Type	Primary antibodies
Applications	WB/IHC-P/IF/ICC/ELISA
Host / Source	Rabbit
Reactivity	Human/Mouse/Rat

PRODUCT PROPERTIES

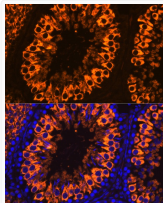
Clonality	Polyclonal
Concentration	Lot specific
Conjugation	Unconjugated
Purification	Affinity purification
Dilution Range	WB:1:500-1:1000 IHC-P:1:50-1:200 IF/ICC:1:50-1:200 ELISA:Recommended starting concentration is 1 Mu g/mL. Please optimize the concentration based on your specific assay requirements.
Formulation	PBS with 0.02% Sodium Azide, 50% Glycerol, pH 7.3.
Isotype	IgG
Molecular Weight	Protein Mw: 99kDa Observed Mw: 90kDa
Storage Instruction	Store at -20°C for up to 1 year from the date of receipt, and avoid repeat freeze-thaw cycles.

TARGET INFORMATION

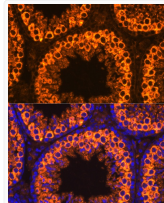
Gene ID	57749
Gene Symbol	Piwil1
UniProt ID	PIWL1_MOUSE
Immunogen Region	1-862
Immunogen Sequence	MTGRARARARGRARGQETVQ HVGAAASQQPGYIPPRPQQS PTEGDLVGRGRQRGMVVGAT SKSQELQISAGFQELSLAER GGRRRDFHDLGVNTRQNLDH VKESKTGSSGIIVKLSTNHF RLTSRPQWALYQYHIDYNPL MEARRLRSAALLFQHEDLIGR
Specificity	Recombinant fusion protein containing a sequence corresponding to amino acids 1-160 of mouse PIWL1 (NP_067286.1).

ADDITIONAL INFORMATION

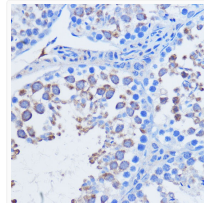
Note **STRICTLY FOR FURTHER SCIENTIFIC RESEARCH USE ONLY (RUO). MUST NOT TO BE USED IN DIAGNOSTIC OR THERAPEUTIC APPLICATIONS.**



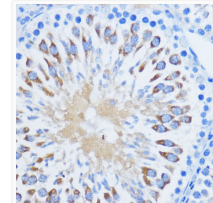
Immunofluorescence analysis of paraffin-embedded Rat testis using PIWIL1 Rabbit polyclonal antibody (STJ25007) at dilution of 1:100. Secondary antibody: Cy3 Goat Anti-Rabbit IgG (H+L) at 1:500 dilution. Blue: DAPI for nuclear staining.



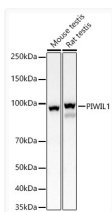
Immunofluorescence analysis of paraffin-embedded Mouse testis using PIWIL1 Rabbit polyclonal antibody (STJ25007) at dilution of 1:100. Secondary antibody: Cy3 Goat Anti-Rabbit IgG (H+L) at 1:500 dilution. Blue: DAPI for nuclear staining.



Immunohistochemistry analysis of PIWIL1 in paraffin-embedded mouse testis using PIWIL1 Rabbit polyclonal antibody (STJ25007) at dilution of 1:100 (40x lens). Perform microwave antigen retrieval with 10 mM PBS buffer pH 7. 2 before commencing with immunohistochemistry staining protocol.



Immunohistochemistry analysis of PIWIL1 in paraffin-embedded rat testis using PIWIL1 Rabbit polyclonal antibody (STJ25007) at dilution of 1:100 (40x lens). Perform microwave antigen retrieval with 10 mM PBS buffer pH 7. 2 before commencing with immunohistochemistry staining protocol.



Western blot analysis of various lysates, using PIWIL1 Rabbit polyclonal antibody (STJ25007) at 1:500 dilution. Secondary antibody: HRP Goat Anti-Rabbit IgG (H+L) (STJS000856) at 1:10000 dilution. Lysates/proteins: 25 Mu g per lane. Blocking buffer: 3% nonfat dry milk in TBST. Detection: ECL Basic Kit. Exposure time: 1s.