

Anti-PIK3CG antibody (1-310) (STJ24995)

GENERAL INFORMATION

Product Type	Primary antibodies
Applications	WB/ELISA
Host / Source	Rabbit
Reactivity	Human

PRODUCT PROPERTIES

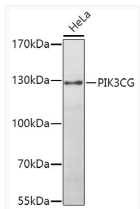
Clonality	Polyclonal
Concentration	Lot specific
Conjugation	Unconjugated
Purification	Affinity purification
Dilution Range	WB:1:500-1:2000 ELISA:Recommended starting concentration is 1 µg/mL. Please optimize the concentration based on your specific assay requirements.
Formulation	PBS with 0.02% Sodium Azide, 50% Glycerol, pH 7.3.
Isotype	IgG
Molecular Weight	Protein Mw: 126kDa Observed Mw: 126kDa
Storage Instruction	Store at -20°C for up to 1 year from the date of receipt, and avoid repeat freeze-thaw cycles.

TARGET INFORMATION

Gene ID	5294
Gene Symbol	PIK3CG
UniProt ID	PIK3CG_HUMAN
Immunogen Region	1-310
Immunogen Sequence	MELENYKQPVVLRDNCRRR RRMKPRSAASLSSMELIPI EFLVPTSQRKCKSPETALLH VAGHGNVEQMKAQVWLRALR TSVAADFYHRLGPHHFLLLY QKKGQWYEIYDKYQVVQTLDC LRYWKATHRSPGQIHLVQR HPPSEESQAFQRQLTALIGY DVTDVSNVHDDLEFTRRGL VTPRMAEVASRDPKLYAMHP WVTSKPLPEYLWKKIANNCCI FIVHRSTTSQTIKVSPDD
Specificity	Recombinant fusion protein containing a sequence corresponding to amino acids 1-310 of human PIK3CG (NP_002640.2).

ADDITIONAL INFORMATION

Note **STRICTLY FOR FURTHER SCIENTIFIC RESEARCH USE ONLY (RUO). MUST NOT TO BE USED IN DIAGNOSTIC OR THERAPEUTIC APPLICATIONS.**



Western blot analysis of lysates from HeLa cells, using PIK3CG Rabbit polyclonal antibody (STJ24995) at 1:1000 dilution. Secondary antibody: HRP Goat Anti-Rabbit IgG (H+L) (STJS00856) at 1:10000 dilution. Lysates/proteins: 25 µg per lane. Blocking buffer: 3% nonfat dry milk in TBST. Detection: ECL Basic Kit. Exposure time: 90s.