

Anti-PEG10 antibody (1-325) (STJ24958)

GENERAL INFORMATION

Product Type	Primary antibodies
Applications	WB/IHC-P/ELISA
Host / Source	Rabbit
Reactivity	Human/Mouse/Rat

PRODUCT PROPERTIES

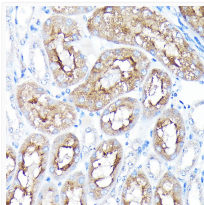
Clonality	Polyclonal
Concentration	Lot specific
Conjugation	Unconjugated
Purification	Affinity purification
Dilution Range	WB:1:200-1:2000 IHC-P:1:50-1:200 ELISA:Recommended starting concentration is 1 Mu g/mL. Please optimize the concentration based on your specific assay requirements.
Formulation	PBS with 0.02% Sodium Azide, 50% Glycerol, pH 7.3.
Isotype	IgG
Molecular Weight	Protein Mw: 80kDa Observed Mw: 55kDa
Storage Instruction	Store at -20°C for up to 1 year from the date of receipt, and avoid repeat freeze-thaw cycles.

TARGET INFORMATION

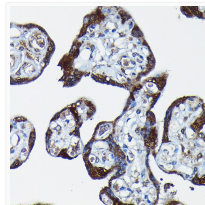
Gene ID	23089
Gene Symbol	PEG10
UniProt ID	PEG10_HUMAN
Immunogen Region	1-325
Immunogen Sequence	MTERRRDELSEEINNLREKV MKQSEENNNLQSQVQKLTEE NTTLREQVEPTPEDEDDDDIE LRGAAAAAAPPPPIEEECPE DLPEKFDGNPDMLAPFMAQC QIFMEKSTRDFSVDRVRVCF VTSMMTGRAARWASAKLERS HYLMMHNYPAFMMEMKHFVED PQRREVAKRKIRRLRQGMGS VIDYSNAFQMIQDLWNEP ALIDQYHEGLSDHIQEELSH LEVAKLSALIGQCIHIER
Specificity	Recombinant fusion protein containing a sequence corresponding to amino acids 1-325 of human PEG10 (NP_001035242.1).

ADDITIONAL INFORMATION

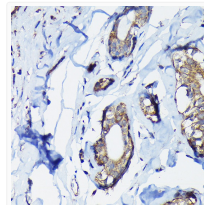
Note STRICTLY FOR FURTHER SCIENTIFIC RESEARCH USE ONLY (RUO). MUST NOT TO BE USED IN DIAGNOSTIC OR THERAPEUTIC APPLICATIONS.



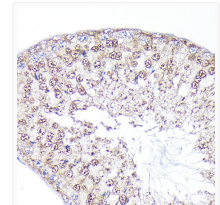
Immunohistochemistry analysis of paraffin-embedded mouse kidney using PEG10 Rabbit polyclonal antibody (STJ24958) at dilution of 1:100 (40x lens). Perform high pressure antigen retrieval with 10 mM citrate buffer pH 6. 0 before commencing with immunohistochemistry staining protocol.



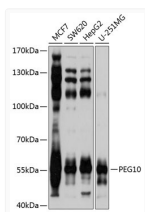
Immunohistochemistry analysis of paraffin-embedded human placenta using PEG10 Rabbit polyclonal antibody (STJ24958) at dilution of 1:100 (40x lens). Perform high pressure antigen retrieval with 10 mM citrate buffer pH 6. 0 before commencing with immunohistochemistry staining protocol.



Immunohistochemistry analysis of paraffin-embedded human breast cancer using PEG10 Rabbit polyclonal antibody (STJ24958) at dilution of 1:100 (40x lens). Perform high pressure antigen retrieval with 10 mM citrate buffer pH 6. 0 before commencing with immunohistochemistry staining protocol.



Immunohistochemistry analysis of paraffin-embedded rat testis using PEG10 Rabbit polyclonal antibody (STJ24958) at dilution of 1:100 (40x lens). Perform high pressure antigen retrieval with 10 mM citrate buffer pH 6. 0 before commencing with immunohistochemistry staining protocol.



Western blot analysis of extracts of various cell lines, using PEG10 antibody (STJ24958) at 1:1000 dilution. Secondary antibody: HRP Goat Anti-Rabbit IgG (H+L) (STJS000856) at 1:10000 dilution. Lysates/proteins: 25 Mu g per lane. Blocking buffer: 3% nonfat dry milk in TBST. Detection: ECL Basic Kit. Exposure time: 1s.