

## Anti-PDGFB antibody (142-241) (STJ24934)

### GENERAL INFORMATION

Product Type	Primary antibodies
Applications	WB/IHC-P/IF/ICC/ELISA
Host / Source	Rabbit
Reactivity	Human/Rat

### PRODUCT PROPERTIES

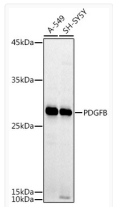
Clonality	Polyclonal
Concentration	Lot specific
Conjugation	Unconjugated
Purification	Affinity purification
Dilution Range	WB:1:500-1:1000 IHC-P:1:50-1:200 IF/ICC:1:50-1:200 ELISA:Recommended starting concentration is 1 µg/mL. Please optimize the concentration based on your specific assay requirements.
Formulation	PBS with 0.05% Proclin300, 50% Glycerol, pH7.3.
Isotype	IgG
Molecular Weight	Protein Mw: 27kDa Observed Mw: 27kDa
Storage Instruction	Store at -20°C for up to 1 year from the date of receipt, and avoid repeat freeze-thaw cycles.

### TARGET INFORMATION

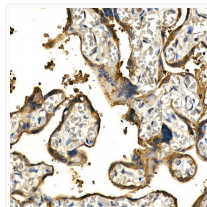
Gene ID	<a href="#">5155</a>
Gene Symbol	<a href="#">PDGFB</a>
UniProt ID	<a href="#">PDGFB_HUMAN</a>
Immunogen Region	142-241
Immunogen Sequence	QCRPTQVQLRPVQVRKIEIV RKKPIFKKATVTLLEDHLACK CETVAAARPVTRSPGGSQEQ RAKTPQTRVTIRTVRVRRPP KGKHRKFKHTHDKTALKETL GA
Specificity	A synthetic peptide corresponding to a sequence within amino acids 140-241 of human PDGFB (NP_002599.1).

### ADDITIONAL INFORMATION

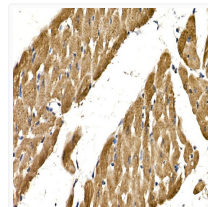
Note **STRICTLY FOR FURTHER SCIENTIFIC RESEARCH USE ONLY (RUO). MUST NOT TO BE USED IN DIAGNOSTIC OR THERAPEUTIC APPLICATIONS.**



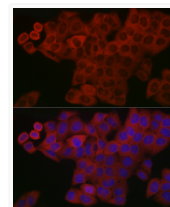
Western blot analysis of extracts of various cell lines, using PDGFB antibody (STJ24934) at 1:1000 dilution. Secondary antibody: HRP Goat Anti-rabbit IgG (H+L) (STJS000856) at 1:10000 dilution. Lysates/proteins: 25 µg per lane. Blocking buffer: 3% non-fat dry milk in TBST. Detection: ECL Basic Kit. Exposure time: 30s.



Immunohistochemistry analysis of paraffin-embedded human placenta using PDGFB rabbit polyclonal antibody (STJ24934) at dilution of 1:100 (40x lens). Perform high pressure antigen retrieval with 10 mM citrate buffer pH 6.0 before commencing with immunohistochemistry staining protocol.



Immunohistochemistry analysis of paraffin-embedded rat heart using PDGFB rabbit polyclonal antibody (STJ24934) at dilution of 1:100 (40x lens). Perform high pressure antigen retrieval with 10 mM citrate buffer pH 6.0 before commencing with immunohistochemistry staining protocol.



Immunofluorescence analysis of HeLa cells using PDGFB rabbit polyclonal antibody (STJ24934) at dilution of 1:100 (40x lens). Blue: DAPI for nuclear staining.