

Anti-PDCD4 antibody (1-260) (STJ24925)

GENERAL INFORMATION

Product Type	Primary antibodies
Applications	WB/IHC-P/ELISA
Host / Source	Rabbit
Reactivity	Human/Mouse

PRODUCT PROPERTIES

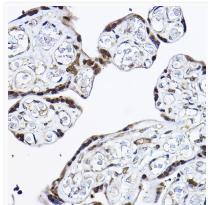
Clonality	Polyclonal
Concentration	Lot specific
Conjugation	Unconjugated
Purification	Affinity purification
Dilution Range	WB:1:500-1:1000 IHC-P:1:50-1:200 ELISA:Recommended starting concentration is 1 Mu g/mL. Please optimize the concentration based on your specific assay requirements.
Formulation	PBS with 0.02% Sodium Azide, 50% Glycerol, pH 7.3.
Isotype	IgG
Molecular Weight	Protein Mw: 52kDa Observed Mw: 60kDa
Storage Instruction	Store at -20°C for up to 1 year from the date of receipt, and avoid repeat freeze-thaw cycles.

TARGET INFORMATION

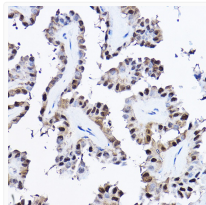
Gene ID	27250
Gene Symbol	PDCD4
UniProt ID	PDCD4_HUMAN
Immunogen Region	1-260
Immunogen Sequence	MDVENEQILNVNPADPDNLS DSLFSGDEENAGTEEIKNEI NGNWISASSINEARINAKAK RRLRKNSSRDSSGRGDSVSDS GSDALRSGLTVPTSPKGRLL DRRRSRSGKGRGLPKKGGAGG KGVWGTGPGQVYDVEEVDVKD PNYDDQENCVYETVVLPLD ERAFEKTLTPIIQEYFEHGD TNEVAEMLRDLNLGEMKSGV PVLAVSLALEGKASHREMTS KLLSDLGCTVMSTTDVEKS
Specificity	Recombinant fusion protein containing a sequence corresponding to amino acids 1-260 of human PDCD4 (NP_055271.2).

ADDITIONAL INFORMATION

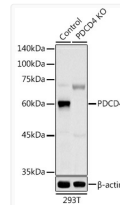
Note STRICTLY FOR FURTHER SCIENTIFIC RESEARCH USE ONLY (RUO). MUST NOT TO BE USED IN DIAGNOSTIC OR THERAPEUTIC APPLICATIONS.



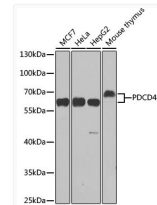
Immunohistochemistry analysis of PDCD4 in paraffin-embedded human placenta using [KO Validated] PDCD4 Rabbit polyclonal antibody (STJ24925) at dilution of 1:20 (40x lens). Perform high pressure antigen retrieval with 10 mM citrate buffer pH 6.0 before commencing with immunohistochemistry staining protocol.



Immunohistochemistry analysis of PDCD4 in paraffin-embedded human thyroid cancer using [KO Validated] PDCD4 Rabbit polyclonal antibody (STJ24925) at dilution of 1:20 (40x lens). Perform high pressure antigen retrieval with 10 mM citrate buffer pH 6.0 before commencing with immunohistochemistry staining protocol.



Western blot analysis of lysates from wild type (WT) and PDCD4 knockout (KO) 293T cells, using [KO Validated] PDCD4 Rabbit polyclonal antibody (STJ24925) at 1:1000 dilution. Secondary antibody: HRP Goat Anti-Rabbit IgG (H+L) (STJS000856) at 1:10000 dilution. Lysates/proteins: 25 Mu g per lane. Blocking buffer: 3% nonfat dry milk in TBST. Detection: ECL Basic Kit. Exposure time: 180s.



Western blot analysis of various lysates using [KO Validated] PDCD4 Rabbit polyclonal antibody (STJ24925) at 1:1000 dilution. Secondary antibody: HRP Goat Anti-Rabbit IgG (H+L) (STJS000856) at 1:10000 dilution. Lysates/proteins: 25 Mu g per lane. Blocking buffer: 3% nonfat dry milk in TBST. Detection: ECL Enhanced Kit. Exposure time: 90s.