

Anti-PCBP2 antibody (199-215) (STJ24914)

GENERAL INFORMATION

| | |
|---------------|-----------------------|
| Product Type | Primary antibodies |
| Applications | WB/IHC-P/IF/ICC/ELISA |
| Host / Source | Rabbit |
| Reactivity | Human/Mouse/Rat |

PRODUCT PROPERTIES

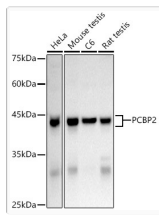
| | |
|---------------------|--|
| Clonality | Polyclonal |
| Concentration | Lot specific |
| Conjugation | Unconjugated |
| Purification | Affinity purification |
| Dilution Range | WB:1:500-1:1000 IHC-P:1:50-1:200 IF/CC:1:50-1:200 ELISA:Recommended starting concentration is 1 µg/mL. Please optimize the concentration based on your specific assay requirements. |
| Formulation | PBS with 0.05% Proclin300, 50% Glycerol, pH 7.3. |
| Isotype | IgG |
| Molecular Weight | Protein Mw: 39kDa Observed Mw: 35-45kDa |
| Storage Instruction | Store at -20°C for up to 1 year from the date of receipt, and avoid repeat freeze-thaw cycles. |

TARGET INFORMATION

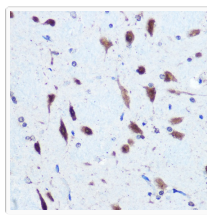
| | |
|--------------------|--|
| Gene ID | 5094 |
| Gene Symbol | PCBP2 |
| UniProt ID | PCBP2_HUMAN |
| Immunogen Region | 199-215 |
| Immunogen Sequence | GIPQSIIECVKQICVVMLET LSQSPKGV TIPYRKPSSS PVIFAGGQDRYSTGSDSASF PHTTSPMCLNPDLEGPPLEA YTIQQQYAIQPD LTKLHQL AMQQSHFPMTHGNTGFSGIE SSSPEVKGYWGLDASAQTTS HELTIPNDLIGCIIGRQGAK INEIRQMMSGAIKIANPVEG STDRQVTITGSAASISLAQY LINVRLSSETGGMGSS |
| Specificity | A synthetic peptide corresponding to a sequence within amino acids 150-250 of human hnRNP E2/PCBP2 (NP_001122383.1). |

ADDITIONAL INFORMATION

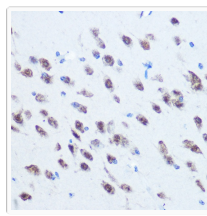
| | |
|------|---|
| Note | STRICTLY FOR FURTHER SCIENTIFIC RESEARCH USE ONLY (RUO). MUST NOT TO BE USED IN DIAGNOSTIC OR THERAPEUTIC APPLICATIONS. |
|------|---|



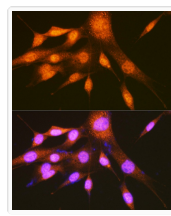
Western blot analysis of extracts of various cell lines, using hnRNP E2/PCBP2 rabbit polyclonal antibody (STJ24914) at 1:1000 dilution. Secondary antibody: HRP Goat Anti-rabbit IgG (H+L) (STJS000856) at 1:10000 dilution. Lysates/proteins: 25 μ g per lane. Blocking buffer: 3% non-fat dry milk in TBST. Detection: ECL Basic Kit. Exposure time: 10s.



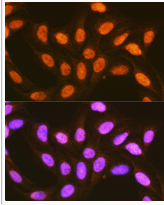
Immunohistochemistry analysis of paraffin-embedded rat brain using hnRNP E2/PCBP2 rabbit polyclonal antibody (STJ24914) at dilution of 1:100 (40x lens). Perform microwave antigen retrieval with 10 mM Tris/EDTA buffer pH 9.0 before commencing with immunohistochemistry staining protocol.



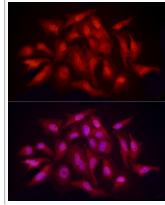
Immunohistochemistry analysis of paraffin-embedded mouse brain using hnRNP E2/PCBP2 rabbit polyclonal antibody (STJ24914) at dilution of 1:100 (40x lens). Perform microwave antigen retrieval with 10 mM Tris/EDTA buffer pH 9.0 before commencing with immunohistochemistry staining protocol.



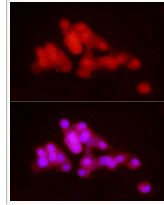
Immunofluorescence analysis of NIH-3T3 cells using hnRNP E2/PCBP2 rabbit polyclonal antibody (STJ24914) at dilution of 1:100 (40x lens). Blue: DAPI for nuclear staining.



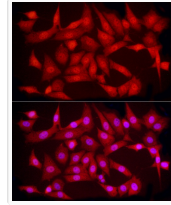
Immunofluorescence analysis of U-2 OS cells using hnRNP E2/PCBP2 rabbit polyclonal antibody (STJ24914) at dilution of 1:100 (40x lens). Blue: DAPI for nuclear staining.



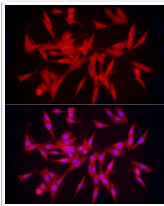
Immunofluorescence analysis of HeLa cells using hnRNP E2/PCBP2 rabbit polyclonal antibody (STJ24914) at dilution of 1:400 (40x lens). Blue: DAPI for nuclear staining.



Immunofluorescence analysis of HepG2 cells using hnRNP E2/PCBP2 rabbit polyclonal antibody (STJ24914) at dilution of 1:400 (40x lens). Blue: DAPI for nuclear staining.



Immunofluorescence analysis of NIH/3T3 cells using hnRNP E2/PCBP2 rabbit polyclonal antibody (STJ24914) at dilution of 1:400 (40x lens). Blue: DAPI for nuclear staining.



Immunofluorescence analysis of PC-12 cells using hnRNP E2/PCBP2 rabbit polyclonal antibody (STJ24914) at dilution of 1:400 (40x lens). Blue: DAPI for nuclear staining.