

Anti-PAX5 antibody (150-300) (STJ24910)

GENERAL INFORMATION

Product Type	Primary antibodies
Applications	WB/IP/ELISA
Host / Source	Rabbit
Reactivity	Human

PRODUCT PROPERTIES

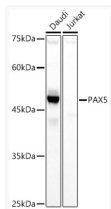
Clonality	Polyclonal
Concentration	Lot specific
Conjugation	Unconjugated
Purification	Affinity purification
Dilution Range	WB:1:500-1:1000 IP:0.5 Mu g-4 Mu g antibody for 200 Mu g-400 Mu g extracts of whole cells ELISA:Recommended starting concentration is 1 Mu g/mL. Please optimize the concentration based on your specific assay requirements.
Formulation	PBS with 0.05% Proclin300, 50% Glycerol, pH 7.3.
Isotype	IgG
Molecular Weight	Protein Mw: 42kDa Observed Mw: 45kDa
Storage Instruction	Store at -20°C for up to 1 year from the date of receipt, and avoid repeat freeze-thaw cycles.

TARGET INFORMATION

Gene ID	5079
Gene Symbol	PAX5
UniProt ID	PAX5_HUMAN
Immunogen Region	150-300
Immunogen Sequence	PVPASSHSIVSTGVSVTQVSS VSTDSAGSSYSISGILGITS PSADTNKRKRDEGIQESVPP NGHSLPGRDFLRKQMRGDLF TQQQLEVLDRVFERQHYSIDI FTTTEPIKPEQTTEYSAMAS LAGGLDDMKANLASPTPADI GSSVPGPQSYSP
Specificity	Recombinant fusion protein containing a sequence corresponding to amino acids 150-300 of human PAX5 (NP_057953.1).

ADDITIONAL INFORMATION

Note **STRICTLY FOR FURTHER SCIENTIFIC RESEARCH USE ONLY (RUO). MUST NOT TO BE USED IN DIAGNOSTIC OR THERAPEUTIC APPLICATIONS.**



Western blot analysis of various lysates using PAX5 Rabbit polyclonal antibody (STJ24910) at 1:1000 dilution. Secondary antibody: HRP Goat Anti-Rabbit IgG (H+L) (STJS000856) at 1:10000 dilution. Lysates/proteins: 25 Mu g per lane. Blocking buffer: 3% nonfat dry milk in TBST. Detection: ECL Basic Kit. Exposure time: 30s.