

## Anti-PARD6A antibody (1-100) (STJ24893)

### GENERAL INFORMATION

Product Type	Primary antibodies
Applications	WB/ELISA
Host / Source	Rabbit
Reactivity	Human/Mouse

### PRODUCT PROPERTIES

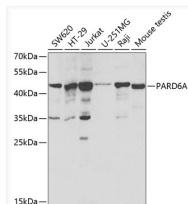
Clonality	Polyclonal
Concentration	Lot specific
Conjugation	Unconjugated
Purification	Affinity purification
Dilution Range	WB:1:500-1:2000 ELISA:Recommended starting concentration is 1 $\mu$ g/mL. Please optimize the concentration based on your specific assay requirements.
Formulation	PBS with 0.01% Thimerosal, 50% Glycerol, pH 7.3.
Isotype	IgG
Molecular Weight	Protein Mw: 37kDa Observed Mw: 47kDa
Storage Instruction	Store at -20°C for up to 1 year from the date of receipt, and avoid repeat freeze-thaw cycles.

### TARGET INFORMATION

Gene ID	<a href="#">50855</a>
Gene Symbol	<a href="#">PARD6A</a>
UniProt ID	<a href="#">PAR6A_HUMAN</a>
Immunogen Region	1-100
Immunogen Sequence	MARPQRTPARSPDSIVEVKS KFDAEFRRFALPRASVSGFQ EFSRLLRAVHQIPGLDVLLG YTDAHGDLLPLTNDDSLHRA LASGPPPLRLLVQKRAEADS
Specificity	A synthetic peptide corresponding to a sequence within amino acids 1-100 of human PARD6A (Q9NPB6).

### ADDITIONAL INFORMATION

Note STRICTLY FOR FURTHER SCIENTIFIC RESEARCH USE ONLY (RUO). MUST NOT TO BE USED IN DIAGNOSTIC OR THERAPEUTIC APPLICATIONS.



Western blot analysis of various lysates using PARD6A Rabbit polyclonal antibody (STJ24893) at 1:200 dilution. Secondary antibody: HRP Goat Anti-Rabbit IgG (H+L) (STJS000856) at 1:10000 dilution. Lysates/proteins: 25  $\mu$ g per lane. Blocking buffer: 3% nonfat dry milk in TBST. Detection: ECL Basic Kit. Exposure time: 90s.