

Anti-NRP2 antibody (21-931) (STJ24823)

GENERAL INFORMATION

Product Type	Primary antibodies
Applications	WB/IF/ICC/ELISA
Host / Source	Rabbit
Reactivity	Human/Mouse/Rat

PRODUCT PROPERTIES

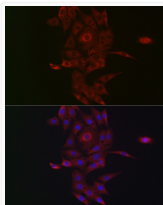
Clonality	Polyclonal
Concentration	Lot specific
Conjugation	Unconjugated
Purification	Affinity purification
Dilution Range	WB:1:500-1:1000 IF/CC:1:50-1:200 ELISA:Recommended starting concentration is 1 μ g/mL. Please optimize the concentration based on your specific assay requirements.
Formulation	PBS with 0.05% Proclin300, 50% Glycerol, pH 7.3.
Isotype	IgG
Molecular Weight	Protein Mw: 105kDa Observed Mw: 130kDa
Storage Instruction	Store at -20°C for up to 1 year from the date of receipt, and avoid repeat freeze-thaw cycles.

TARGET INFORMATION

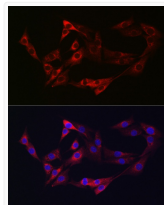
Gene ID	8828
Gene Symbol	NRP2
UniProt ID	NRP2_HUMAN
Immunogen Region	21-931
Immunogen Sequence	RGQPDPPCGGRLNSKDAGYI TSPGYPDYPSHQNCEWIVY APEPNQKIVLNFNPHFEIEK HDCKYDFIEIRDGDSSESADL LGKHCGNIAPTTIISSGSML YIKFTSDYARQGAGFSLRYE IFKTSQEDCSKNFTSPNGTI ESPGFPEKYPHNLDCTFTIL AKPKMEIILQFLIFDLEHDP LQVGEGDCKYDWLDIWDGI
Specificity	Recombinant fusion protein containing a sequence corresponding to amino acids 21-219 of human NRP2 (NP_957718.1).

ADDITIONAL INFORMATION

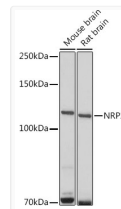
Note **STRICTLY FOR FURTHER SCIENTIFIC RESEARCH USE ONLY (RUO). MUST NOT TO BE USED IN DIAGNOSTIC OR THERAPEUTIC APPLICATIONS.**



Immunofluorescence analysis of PC-12 cells using NRP2 Rabbit polyclonal antibody (STJ24823) at dilution of 1:50 (40x lens). Blue: DAPI for nuclear staining.



Immunofluorescence analysis of NIH/3T3 cells using NRP2 Rabbit polyclonal antibody (STJ24823) at dilution of 1:50 (40x lens). Blue: DAPI for nuclear staining.



Western blot analysis of extracts of various cell lines, using NRP2 antibody (STJ24823) at 1:500 dilution. Secondary antibody: HRP Goat Anti-Rabbit IgG (H+L) (STJS000856) at 1:10000 dilution. Lysates/proteins: 25 μ g per lane. Blocking buffer: 3% nonfat dry milk in TBST. Detection: ECL Basic Kit. Exposure time: 10s.