

Anti-NPPA antibody (26-151) (STJ24798)

GENERAL INFORMATION

Product Type	Primary antibodies
Applications	WB/IF/ICC/ELISA
Host / Source	Rabbit
Reactivity	Human/Mouse/Rat

PRODUCT PROPERTIES

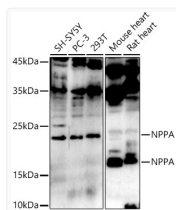
Clonality	Polyclonal
Concentration	Lot specific
Conjugation	Unconjugated
Purification	Affinity purification
Dilution Range	WB:1:500-1:1000 IF/CC:1:50-1:200 ELISA:Recommended starting concentration is 1 Mu g/mL. Please optimize the concentration based on your specific assay requirements.
Formulation	PBS with 0.05% Proclin300, 50% Glycerol, pH 7.3.
Isotype	IgG
Molecular Weight	Protein Mw: 16kDa Observed Mw: 16kDa
Storage Instruction	Store at -20°C for up to 1 year from the date of receipt, and avoid repeat freeze-thaw cycles.

TARGET INFORMATION

Gene ID	4878
Gene Symbol	NPPA
UniProt ID	ANF_HUMAN
Immunogen Region	26-151
Immunogen Sequence	LTWQEIMSITELQGLNAPSE PSFEPQAPAPYLGPPPPTY CPCSIIHPDSGFPLPPPPYEL PASTSHVPDPYSYGNAIP VSKPLSLSGLLSEPLQDPLA LLDIGLPAGPPKQEDPESD SGLSLN
Specificity	Recombinant fusion protein containing a sequence corresponding to amino acids 26-151 of human NPPA (NP_006154.1).

ADDITIONAL INFORMATION

Note STRICTLY FOR FURTHER SCIENTIFIC RESEARCH USE ONLY (RUO). MUST NOT TO BE USED IN DIAGNOSTIC OR THERAPEUTIC APPLICATIONS.



Western blot analysis of various lysates using NPPA Rabbit polyclonal antibody (STJ24798) at 1:1000 dilution. Secondary antibody: HRP Goat Anti-Rabbit IgG (H+L) (STJS000856) at 1:10000 dilution. Lysates/proteins: 25 Mu g per lane. Blocking buffer: 3% nonfat dry milk in TBST. Detection: ECL Enhanced Kit. Exposure time: 90s.