

Anti-NOS1 antibody (1-180) (STJ24781)

GENERAL INFORMATION

Product Type	Primary antibodies
Applications	WB/ELISA
Host / Source	Rabbit
Reactivity	Rat

PRODUCT PROPERTIES

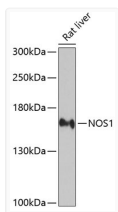
Clonality	Polyclonal
Concentration	Lot specific
Conjugation	Unconjugated
Purification	Affinity purification
Dilution Range	WB:1:500-1:2000 ELISA:Recommended starting concentration is 1 µg/mL. Please optimize the concentration based on your specific assay requirements.
Formulation	PBS with 0.05% Proclin300, 50% Glycerol, pH 7.3.
Isotype	IgG
Molecular Weight	Protein Mw: 161kDa Observed Mw: 160kDa
Storage Instruction	Store at -20°C for up to 1 year from the date of receipt, and avoid repeat freeze-thaw cycles.

TARGET INFORMATION

Gene ID	4842
Gene Symbol	NOS1
UniProt ID	NOS1_HUMAN
Immunogen Region	1-180
Immunogen Sequence	MEDHMFVQQIQPNVISVRL FKRKVGGLGFLVKERVSKPP VIISDLIRGGAAEQSGLIQA GDIILAVNGRPLVDLSYDSA LEVLRGIASETHVVLILRGP EGFTHLETTFTGDGTPKTI RVTQPLGPPTKAVDLSHQPP AGKEQPLAVDGGASGPGNGPQ HAYDDGQEAAGSLPHANGLAP
Specificity	Recombinant fusion protein containing a sequence corresponding to amino acids 1-180 of human NOS1 (NP_000611.1).

ADDITIONAL INFORMATION

Note STRICTLY FOR FURTHER SCIENTIFIC RESEARCH USE ONLY (RUO). MUST NOT TO BE USED IN DIAGNOSTIC OR THERAPEUTIC APPLICATIONS.



Western blot analysis of extracts of rat liver, using NOS1 antibody (STJ24781) at 1:2000 dilution. Secondary antibody: HRP Goat Anti-Rabbit IgG (H+L) (STJS000856) at 1:10000 dilution. Lysates/proteins: 25 µg per lane. Blocking buffer: 3% nonfat dry milk in TBST. Detection: ECL Basic Kit. Exposure time: 60s.