

## Anti-NFKB2 antibody (690-899) (STJ24762)

### GENERAL INFORMATION

Product Type	Primary antibodies
Applications	WB/IHC-P/IF/ICC/ELISA
Host / Source	Rabbit
Reactivity	Human/Mouse/Rat

### PRODUCT PROPERTIES

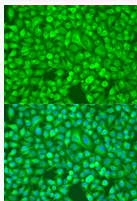
Clonality	Polyclonal
Concentration	Lot specific
Conjugation	Unconjugated
Purification	Affinity purification
Dilution Range	WB:1:500-1:2000 IHC-P:1:50-1:200 IF/CC:1:50-1:200 ELISA:Recommended starting concentration is 1 Mu g/mL. Please optimize the concentration based on your specific assay requirements.
Formulation	PBS with 0.02% Sodium Azide, 50% Glycerol, pH 7.3.
Isotype	IgG
Molecular Weight	Protein Mw: 97kDa Observed Mw: 120kDa
Storage Instruction	Store at -20°C for up to 1 year from the date of receipt, and avoid repeat freeze-thaw cycles.

### TARGET INFORMATION

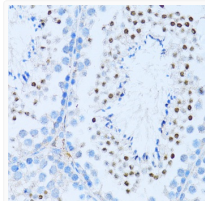
Gene ID	<a href="#">4791</a>
Gene Symbol	<a href="#">NFKB2</a>
UniProt ID	<a href="#">NFKB2_HUMAN</a>
Immunogen Region	690-899
Immunogen Sequence	AGADHAENEELCPPLPSP TSDSDSESGPEKDTRSSFR GHTPLDLTCSTKVKTLNLA AQNTMEPPLTPSPAGPGLS LGDTALQNLEQLLDGPEAQQ SWAELAERLGLRSLVDYTRQ TTPSPGSLRSYELAGGDLA GLLEALSDMGLEEGVRLRG PETRDKLPSTEVKEDSAYGS QSVEQAEKLGPPPEPPGGL CHGHPQPQVH
Specificity	Recombinant fusion protein containing a sequence corresponding to amino acids 690-899 of human NF-Kappa B2 (NP_002493.3).

### ADDITIONAL INFORMATION

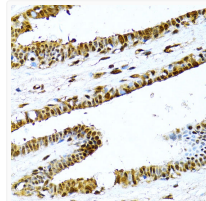
Note STRICTLY FOR FURTHER SCIENTIFIC RESEARCH USE ONLY (RUO). MUST NOT TO BE USED IN DIAGNOSTIC OR THERAPEUTIC APPLICATIONS.



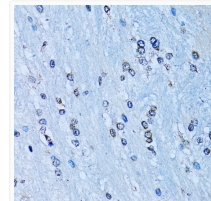
Immunofluorescence analysis of U2OS cells using NF-Kappa B2 antibody (STJ24762) at dilution of 1:100. Blue: DAPI for nuclear staining.



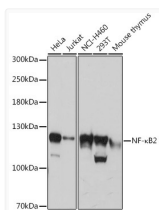
Immunohistochemistry analysis of paraffin-embedded mouse testis using NF-Kappa B2 antibody (STJ24762) at dilution of 1:100 (40x lens). Perform microwave antigen retrieval with 10 mM PBS buffer pH 7. 2 before commencing with immunohistochemistry staining protocol.



Immunohistochemistry analysis of paraffin-embedded human breast using NF-Kappa B2 antibody (STJ24762) at dilution of 1:100 (40x lens). Perform microwave antigen retrieval with 10 mM PBS buffer pH 7. 2 before commencing with immunohistochemistry staining protocol.



Immunohistochemistry analysis of paraffin-embedded rat brain using NF-Kappa B2 antibody (STJ24762) at dilution of 1:100 (40x lens). Perform microwave antigen retrieval with 10 mM PBS buffer pH 7. 2 before commencing with immunohistochemistry staining protocol.



Western blot analysis of extracts of various cell lines, using NF-Kappa B2 antibody (STJ24762) at 1:3000 dilution. Secondary antibody: HRP Goat Anti-Rabbit IgG (H+L) (STJS000856) at 1:10000 dilution. Lysates/proteins: 25 Mu g per lane. Blocking buffer: 3% nonfat dry milk in TBST. Detection: ECL Basic Kit. Exposure time: 30s.